

AIR FORCE  
ARMY  
MARINE CORPS

T.O. 1 OE 19-7-4-1  
FORMERLY T.O. 1 OH6- 12-4-4  
TM 11-5895-1 024-24P-1  
TM SL-4-08056A-1

---

**SUPPLEMENTARY TECHNICAL MANUAL  
ILLUSTRATED PARTS BREAKDOWN  
VOLUME 2**

**CONTROL-INDICATOR GROUP  
OD- 145/TYQ  
PART NUMBER 903630-2**

**TEXAS INSTRUMENTS INCORPORATED  
F 19628-78-C-0185**

**Each transmittal of this document outside of the Department of Defense must have approval of the  
issuing Service**

**THIS PUBLICATION IS INCOMPLETE WITHOUT BASIC T.O. 1OE19-7-4**

**Published under authority of the Secretary of the Air Force**

---

**LIST OF EFFECTIVE PAGES**

**INSERT LATEST CHANGED PAGES  
DESTROY SUPERSEDED PAGES**

**NOTE:** The portion of the text affected by the changes is indicated by a vertical line in the outer margins of the page. Changes to illustrations are indicated by miniature pointing hands. Changes to wiring diagrams are indicated by shaded areas.

Dates of issue for original and changed pages are:

Original.....0 .....1 October 1980

TOTAL NUMBER OF PAGES IN THIS PUBLICATION IS 68 CONSISTING OF THE FOLLOWING:

Page No.	*Change No.	Page No.	*Change No.	Page No.	*Change No.
Title .....	0				
A .....	0				
i .....	0				
ii Blank .....	0				
1-1 - 1-13.....	0				
1-14 Blank .....	0				
2-1 - 2-34 .....	0				
3-1 - 3-11 - .....	0				
3-12 Blank .....	0				
4-1 - 4-4.....	0				

\*Zero in this column indicates an original page.

TABLE OF CONTENTS

Section/Para		Page
I	INTRODUCTION .....	1-1
1-1	Scope .....	1-1
1-3	Related Publications.....	1-1
1-5	Section I - Introduction .....	1-1
1-7	Section II - Maintenance Parts List.....	1-1
1-17	Section III - Numerical Index .....	1-7
1-26	Section IV - Reference Designation Index .....	1-8
1-30	Abbreviations.....	1-8
1-32	How to Use the IPB.....	1-8
II	MAINTENANCE PARTS LIST.....	2-1
	Indicator, Video IP-1354/TYQ .....	2-1
	Chassis Assembly .....	2-3
	LVPS A4 Circuit Card Assembly .....	2-9
	Video Amplifier A1 Circuit Card Assembly .....	2-12
	Vertical Deflection and Sync A2 Circuit Card Assembly .....	2-16
	Horizontal Deflection A3 Circuit Card Assembly .....	2-20
	Interconnect Assembly A7.....	2-25
	High Voltage Power Supply Assembly A5.....	2-27
	HVPS A5 Circuit Card Assembly.....	2-29
	Yoke Assembly.....	2-31
	Harness Assembly .....	2-32
	Chassis Subassembly .....	2-33
III	NUMERICAL INDEX .....	3-1
IV	REFERENCE DESIGNATION INDEX .....	4-1

**SECTION I  
INTRODUCTION**

1-1. SCOPE.

1-2. This Illustrated Parts Breakdown (IPB) lists and illustrates the Indicator, Video IP-1354/TYQ, part number 3066650, manufactured by Conrac Corp., Duarte, California, in accordance with contract number F19628-78-C-0185.

1-3. RELATED PUBLICATIONS.

1-4. The following related publications contain operation, maintenance, and overhaul instructions for the equipment covered by this IPB:

TO 10H6-12-4-1	Operation and Maintenance Instructions
TM 11-58.95-1024-14	Operation and Maintenance Instructions
TM 08045-15/8	Operation and Maintenance Instructions

1-5. SECTION I - INTRODUCTION.

1-6. The Introduction defines and explains the use of the IPB.

1-7. SECTION II - MAINTENANCE PARTS LIST.

1-8. The Maintenance Parts List (MPL) consists of illustrations and their associated parts lists for Indicator, Video IP-1354/TYQ broken down into assemblies, subassemblies, and detail parts. The following paragraphs define the use of each column in the parts lists:

1-9. **FIGURE AND INDEX NUMBER.** This column contains the numerically assigned figure numbers for each illustration. Within each figure, numerically arranged index numbers are assigned to aid in locating a part in the MPL and the associated illustrations. If more than one sheet is required to illustrate the assembly, the sheet number will follow the figure number separated by a diagonal (/).

1-10. **PART NUMBER.** The numbers listed in this column are those pertaining to the manufacturer, except in the case of government standard parts (AF, AN, MS, JAN, MIL, and USN), and are used exclusively to identify parts. Parts which are used exactly as purchased, i.e., in a condition ready for installation are listed in the Part No. column by the manufacturer's part number with the Conrac Corporation specification control number parenthetically following the description in the description column. An asterisk (\*) following a part number signifies that the part must be requisitioned in accordance with the requirements of AFR 6-4. A number sign (#) following a part number identifies the item as GFE/CFE and signifies that a detailed parts breakdown appears in a separate manual. Refer to paragraph 1-3 for related publications. In general, assemblies and parts installed at the time the end item was manufactured are listed and identified in the manual. When an assembly or part (including vendor items), different from the original, was installed during the manufacture of later items, series, or blocks, all assemblies or parts are listed and identified by a "Usable-on"

code (para 1-15). However, when the original assembly or part does not have continued application (no spares of the original were procured or such spares are no longer authorized for replacement), only the preferred assembly or part is listed. Also, when an assembly or part was installed during modification, and the original does not have continued application, only the preferred item is listed. Interchangeable and substitute assemblies and parts, subsequently authorized by the government, are not listed in this manual; such items are identified by information available through the Interchangeable and Substitute (I & S) Data Systems. Refer to TO 00-25-184.

1-11. FEDERAL SUPPLY CODE FOR MANUFACTURERS (FSCM). The FSCM identifies the manufacturer or government agency whose number appears in the Part Number column. When an FSCM does not appear in the current issue of H4-1, H4-2, or H4-3 Cataloging Handbooks, the word NONE will appear in the FSCM column and the name and address of the manufacturer or government agency will be shown in parentheses following the item description. Refer to table 1-1 for FSCM Code-to-Name List and table 1-2 for FSCM Name-to-Code List.

1-12. DESCRIPTION. This column contains the approved item name for each part and distinguishing modifiers, where applicable. The MPL is indented to indicate item relationship. Indention is indicated by leader points or periods, one point or period signifying one indention. When the nomenclature exceeds a single line presentation, the second or following lines are indented two additional indents from the first line. The term NHA (Next Higher Assembly) indicates the assembly of the item from which reference is made. Conrac Corp. specification control numbers parenthetically follow the description where applicable. When the word NONE appears in the FSCM column, the name and address of the manufacturer or government agency ) parenthetically follows the description.

Example of indention procedure:

- 1 2 3 4 5 6 7 Description
- Article, Main group, or Main assembly
- . Assembly
- . Attaching parts for assembly (AP)
- . . Detail parts for assembly
- . . Subassemblies
- . . . Attaching parts for subassemblies (AP)
- . . . Detail parts for subassemblies
- . . . Sub-subassemblies
- . . . Attaching parts for sub-subassemblies (AP)
- . . . . Detail parts for sub-subassemblies

1-13. ATTACHING PARTS. Attaching parts are listed immediately beneath the item to be attached and preceding any detail parts of the item. Identification of attaching parts is by the parenthetic code (AP) following the description of the part. Attaching parts are listed at the same indention as the part they attach.

Example:

- PLATE
- SCREW (AP)
- WASHER (AP)
- CONNECTOR

Table 1-1. FSCM Code-to-Name List

FSCM	Vendor name and address	FSCM	Vendor name and address
00779	Amp Inc. P.O. Box 3608 Harrisburg, Pa. 17105	22599	Elastic Stop Nut Corp. of America Fastener Div. 16150 Stagg St. Van Nuys, Ca. 91409
03508	General Electric Co. Semiconductor Products Dept. West Genessee St. Auborn, N.Y. 13021	29587	Bunker Ramo Corp. Amphenol Industrial Div. 1830 S. 54th Ave. Chicago, Ill. 60650
04713	Motorola Inc. Semiconductor Products Div. 5005 E. McDowell Rd. Phoenix, Az. 85008	46384	Penn Engineering and Mfg. Corp. P.O. Box 311 Doylestown, Pa. 18901
05820	Wakefield Engineering Inc. Audobon Rd. Wakefield, Ma. 01880	52094	Calmark Corp. 4947 Walnut Grove Ave. San Gabriel, Ca. 91776
06540	Mite Corp. Amatom Elec. Hardware Div. 446 Blake St. New Haven, Conn. 06515	55285	Berquist Co. 5300 Edina Blvd. Minneapolis, Minn. 55435
08289	Delbert Blinn Co., Inc. 1678 E. Mission Blvd. Pomona, Ca. 91766	71468	ITT Cannon Electric 666 E. Dyer Rd. Santa Ana, Ca. 92705
10400	Airborn Inc. 4321 Airborn Dr. Addison, TX. 75001	71785	TRW Cinch Connectors 1501 Morse Ave. Elk Grove Village, Ill. 60007
13103	Thermalloy Co. Inc. P.O. Box 3429 2021 W. Valley View Lane Dallas, TX. 75234	72737	Conrac Corp. Instrument/Controls Div. 1600 S. Mountain Ave. Duarte, Ca. 91010
14099	Semtech Corp. 652 Mitchell Rd. Newbury Park, Ca. 91320	80294	Bourns Inc. Instrument Div. 6135 Magnolia Ave. Riverside, Ca. 92506
15199	Admiral Plastics Corp. P.O. Box 65675 3630 Tyburn St. Los Angeles, Ca. 90065		
		<b>1-3</b>	

*Table 1-1. FSCM Code-to-Name List - Continued*

FSCM	Vendor name and address	FSCM	Vendor name and address
81312	Litton Systems Inc. Winchester Elec. Div. Main St. and Hillside Ave. Oakville, Ct. 06779	95712	Bendix Corp. Electrical Components Div. Microwave Devices Plant Hurricane Rd. Franklin, Ind. 46131
82851	National Manufacturing Co. First Ave. Sterling, Ill. 61081	95987	Weckesser Co. Inc. 444 W. Irving Park Rd. Chicago, Ill. 60641
82877	Rotron Inc. 7-9 Wasbrouck Lane Woodstock, N.Y. 12498	98291	Seaelectro Corp. 225 Hoyt Ave. Hamaroneck, N.Y. 10544
88245	Litton Systems Inc. USECO Div. 13536 Saticoy St. Van Nuys, Ca. 91409	98978	International Electronic Research Corp. 135 W. Magnolia Blvd. Burbank, Ca. 91502

Table 1-2. FSCM Name-to-Code List

Vendor name and address	FSCM	Vendor name and address	FSCM
Admiral Plastics Corp. P.O. Box 65675 3630 Tyburn St. Los Angeles, Ca. 90065	15199	Elastic Stop Nut Corp. of America Fastener Div. 16150 Stagg St. Van Nuys, Ca. 91409	22599
Airborn Inc. 4321 Airborn Dr. Addison, Tx. 75001	10400	General Electric Co. Semiconductor Products Dept. West Genessee St. Auborn, N.Y. 13021	03508
Amp Inc. P.O. Box 3608 Harrisburg, Pa. 17105	00779	International Electronic Research Corp. 135 W. Magnolia Blvd. Burbank, Ca. 91502	98978
Bendix Corp. Electrical Components Div. Microwave Devices Plant Hurricane Rd. Franklin, Ind. 46131	95712	ITT Cannon Electric 666 E. Dyer Rd. Santa Ana, Ca. 92705	71468
Berquist Co. 5300 Edina Blvd. Minneapolis, Minn. 55435	55285	Litton Systems Inc. USECO Div. 13536 Saticoy St. Van Nuys, Ca. 91409	88245
Bourns Inc. Instrument Div. 6135 Magnolia Ave. Riverside, Ca. 92506	80294	Litton Systems Inc. Winchester Elec. Div. Main St. and Hillside Ave. Oakville, Ct. 06779	81312
Bunker Ramo Corp. Amphenol Industrial Div. 1830 S. 54th Ave. Chicago, Ill. 60650	29587	Mite Corp. Amatom Elec. Hardware Div. 446 Blake St. New Haven, Conn. 06515	06540
Calmark Corp. 4947 Walnut Grove Ave. San Gabriel, Ca. 91776	52094	Motorola Inc. Semiconductor Products Div. 5005 E. McDowell Rd. Phoenix, Az. 85008	04713
Conrac Corp. Instrument/Controls Div. 1600 S. Mountain Ave. Duarte, Ca. 91010	72737	National Manufacturing Co. Sterling, Ill. 61081	82851
First Ave. Delbert Blinn Co., Inc. 1678 E. Mission Blvd. Pomona, Ca. 91766	08289		



*Table 1-2. FSCM Name-to-Code List - Continued*

Vendor name and address	FSCM	Vendor name and address	FSCM
Penn Engineering and Mfg. Corp. P.O. Box 311 Doylestown, Pa.	46384  18901	Thermalloy Co., Inc. P.O. Box 3429 2021 W. Valley View Lane Dallas, Tx. 75234	13103
Rotron Inc. 7-9 Wasbrouck Lane Woodstock, N.Y. 12498	82877	TRW Cinch Connectors 1501 Morse Ave. Elk Grove Village, Ill. 60007	71785
Sealectro Corp. 225 Hoyt Ave. Hamaroneck, N.Y. 10544	98291	Wakefield Engineering Inc. Audobon Rd. Wakefield, Ma. 01880	05820
Semtech Corp. 652 Mitchell Rd. Newbury Park, Ca. 91320	14099	Weckesser Co., Inc. 444 W. Irving Park Rd. Chicago, Ill. 60641	95987

1-14. **UNITS PER ASSEMBLY.** Shown in this column is the number of units required per assembly, per subassembly, and per sub-subassembly, as applicable. If more than one assembly is required, the total number of such assemblies is shown. For detail or subassembly parts of an assembly, the quantity required for one assembly is shown. The unit of measure is "each" unless otherwise specified in the description column. The notation REF in the Units Per Assembly column indicates that the quantity of the referenced assembly at any one location can be determined by referring to the next higher assembly figure number which parenthetically follows the nomenclature of the item.

1-15. **USABLE ON CODE.** Part variations within groups or models are identified by a symbol in the Usable On Code column of the MPL. The absence of a code or symbol in the Usable On Code column indicates that the parts so shown are usable as replacements on all models or groups covered by this publication.

1-16. **SOURCE, MAINTENANCE, AND RECOVERABILITY (SMR) CODE.** This manual contains Joint Military Services Uniform SMR codes only. Definitions of these SMR codes are available in TO 00-25-195.

1-17. **SECTION III - NUMERICAL INDEX.**

1-18. The Numerical Index contains a complete alphanumeric listing of all the part numbers appearing in the MPL with applicable figure and index numbers for each part. Part numbers listed that do not appear in the MPL are followed by crossreference note to a new part number, next higher assembly or numbers under which parts are to be requisitioned.

1-19. **PART NUMBER.** This column contains all the part numbers listed in accordance with the alphanumeric part number filing system described below. Part number arrangement starts with the left-hand figure or letter and continues from left to right, one position at a time. The order of precedence for the first position is as follows:

Letters A through Z

Numerals 0 through 9

The order of precedence in the second and succeeding position is as follows:

Space

Symbol

Letters A through Z

Numerals 0 through 9

1-20. **NATIONAL STOCK NUMBER.** This column contains the 13-digit National Stock Number.

1-21. **FIGURE AND INDEX NUMBER.** This column contains figure and index numbers which are used to locate parts in the MPL. When an item is not assigned an index number, the figure and index number of the preceding part in the MPL is used. The letter F precedes the figure number, i.e., F7-6, to mean "follows". The entry 5/2-61 means that reference is made to index 61 on illustration sheet 2 of figure 5.

- 1-22. QUANTITY PER END ITEM. The quantity shown in this column is the quantity required per end item.
- 1-23. USMC UNIQUE SMR CODES. If any Marine Corps SMR codes are different from the Air Force SMR codes (para 1-16), those unique Marine Corps SMR codes are listed in this column.
- 1-24. USMC SPECIAL STOCK INDEX CODE. Not used.
- 1-25. USMC REPLACEMENT FACTOR. Not used.
- 1-26. SECTION IV - REFERENCE DESIGNATION INDEX.
- 1-27. The reference Designation Index consists of those electrical and electronic parts to which reference may be made in schematics, with applicable figure and index number for each reference designation.
- 1-28. REFERENCE DESIGNATION. This column consists of alphabetically and numerically arranged designations which have been assigned to electrical and electronic parts in accordance with USA Standard Reference Designations for Electrical and Electronics Parts and Equipments, Y32. 16. Typical class designation letters are explained in table 1-3. Refer to Y32.16 for a complete explanation of reference designations.
- 1-29. FIGURE AND INDEX NUMBER. This column contains the figure and index number for each reference designated item listed. When a reference designated part has not been assigned an index number, the figure and index number of the preceding part in the MPL is used with the letter F before the figure number, i.e., F7-6, to mean "follows". The notation (Same as ..... ) refers to a like assembly which has component designations listed.
- 1-30. ABBREVIATIONS.
- 1-31. The abbreviations used throughout this publication are in accordance with MIL-STD-12.
- 1-32. HOW TO USE THE IPB.
- 1-33. Information on how to use the IPB is shown in Figure 1.

Table 1-3. Class Designation Letters

A	Assembly, separable or repairable Subassembly, separable or repairable		Post, binding Protector gap Rotary joint Shield, electrical Terminal (individual)
AR	Amplifier (other than rotating)		
AT	Attenuator Isolator	EQ	Equalizer Network, equalizing
B	Blower Fan Motor Resolver Synchro	F	Fuse Limiter, current
BT	Battery	FL	Filter
C	Capacitance bushing Capacitor	G	Amplifier, rotating Chopper, electronic Exciter (rotating machine) Frequency changer Generator
CB	Circuit breaker	H	Hardware
CP	Adapter, connector Junction (coaxial or waveguide)	HP	Hydraulic part
CR	Absorber, overvoltage Crystal diode Crystal unit Detector, crystal Rectifier Selenium cell Semiconductor device, diode Switch, semiconductor diode Varistor	HR	Heater Lamp, heating Lamp, infrared
DC	Coupler, directional	HS	Handset
DL	Delay line	HT	Earphone Headset
DS	Audible signaling device Flasher Lamp	J	Connector, receptacle, electrical Jack Receptacle (connector, stationary portion) waveguide flange (choke)
E	Antenna Brush, electrical contact Contact, electrical Insulator Loop antenna Magnet, permanent Part, Miscellaneous electrical	K	Contractor Relay
		L	Coil Inductor Reactor Solenoid, electrical
		LS	Horn, electrical Speaker
			1-9

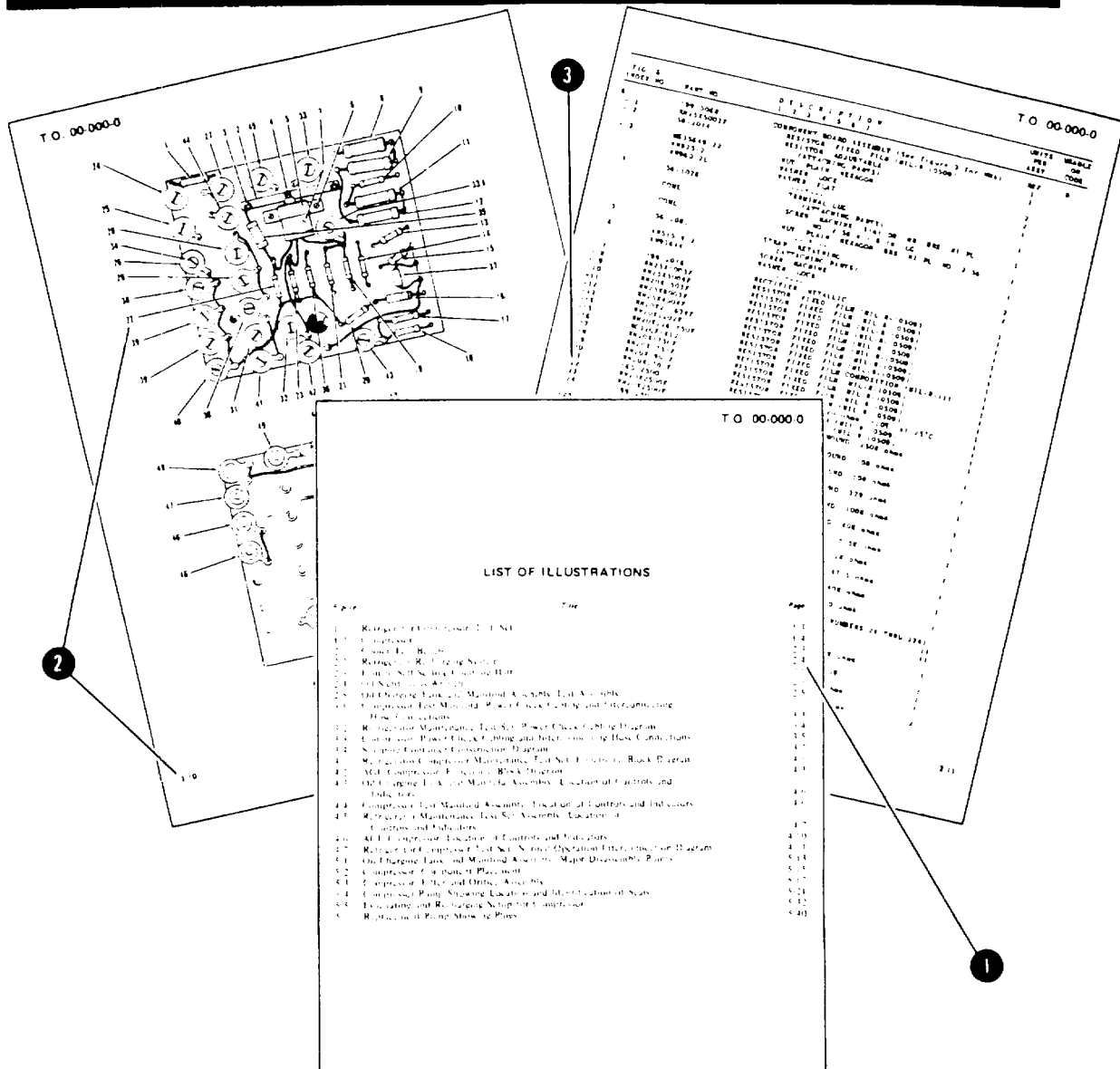
Table 1-3. Class Designation Letters - Continued

M	Clock Counter, electrical Gage Instrument Meter Oscillograph Oscilloscope Recorder, elapsed time Strain gage Thermometer Timer, electric	R	Potentiometer Resistor Rheostat Shunt, instrument
MG	Converter Dynamotor Inverter Switch	RE	Receiver, radio
MK	Microphone	RT	Ballast lamp Ballast tube Lamp, resistance Thermistor
MP	Gyroscope Part, miscellaneous mechanical (bearing, coupling, gear, shaft) Part, structural Reed, vibration Tuning fork	RV	Varistor
MT	Transducer	S	Key telegraph  Thermostat
P	Connector, plug, electrical Disconnecting device (connector, plug) Plug, electrical (connector movable portion) Waveguide flange (plain)	SQ	Squib
PS	Inverter, static (dc to ac) Power supply Thermogenerator	SR	Slip ring
PU	Eraser, magnetic Recording head	T	Taper Transformer
Q	Transistor Rectifier, semiconductor Controlled Switch, semiconductor Triode thyristor	TB	Terminal board
		TC	Thermocouple
		TP	Test point
		TR	Transmitter, radio
		U	Integrated circuit package
		V	Barrier photocell Electron tube Phototube Photoelectric cell
		VR	Crystal diode, breakdown Regulator, voltage (excluding electron tube)
		W	Bus bar Cable Waveguide
		Wire	
			<b>1-10</b>

Table 1-3. Class Designation Letters - Continued

WT	Tiepoint, wiring	XV	Electron tube socket
x	Followed by reference designation of mounted part	Y	Crystal unit Oscillator Resonator, tuning fork
XF	Fuseholder	z	Cavity, tuned Mode suppressor Network, general (where specific class letters do not fit) Tuned circuit
XDS	Lampholder		

# HOW TO USE THE ILLUSTRATED PARTS BREAKDOWN

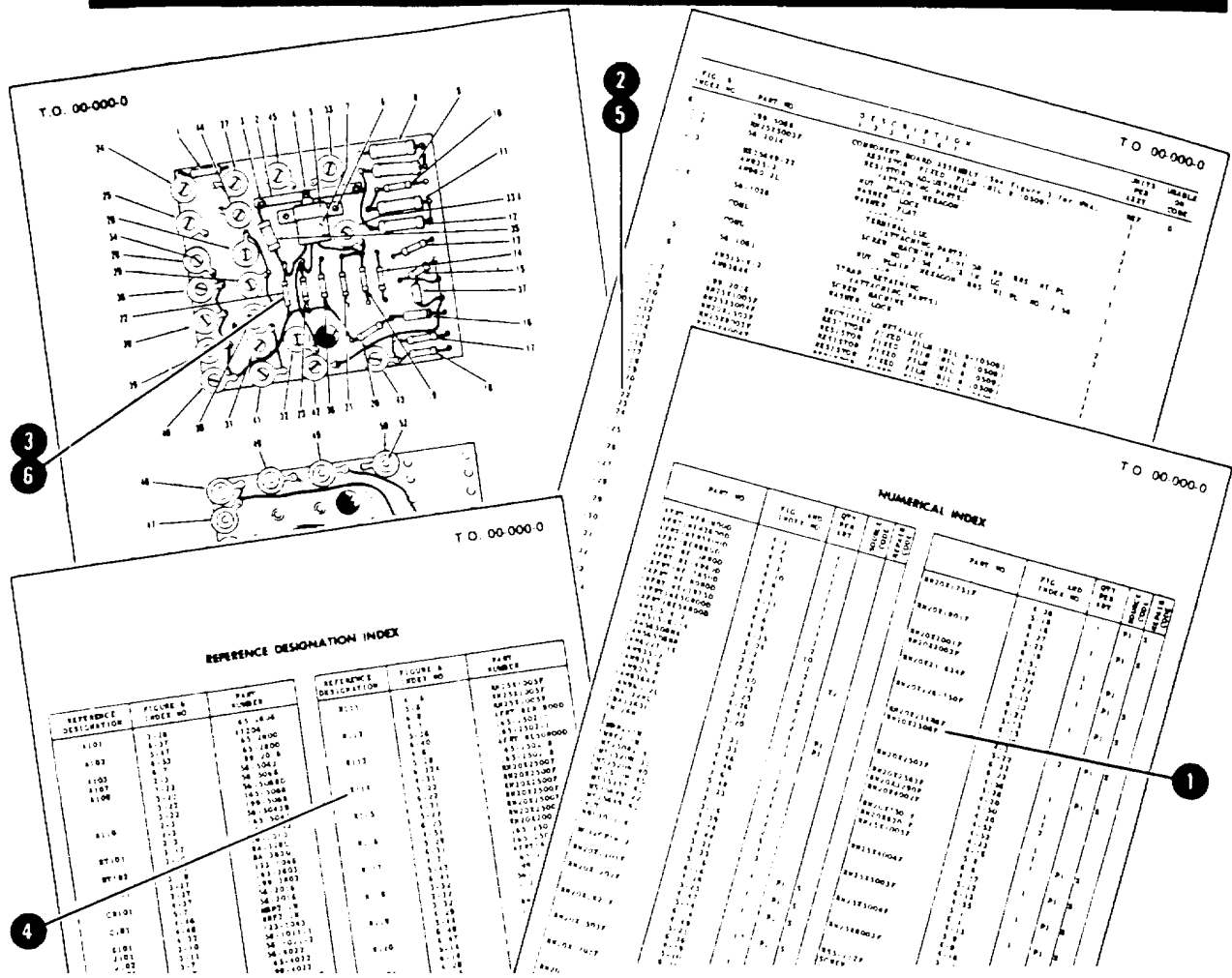


## WHEN THE PART NUMBER IS NOT KNOWN

- (1) Determine the function and application of the part required. Turn to the List of Illustrations and select the most appropriate title. Note the illustration page number.
- (2) Turn to the page indicated and locate the desired part on the illustration.
- (3) From the illustration, obtain the index number assigned to the part desired. Refer to the accompanying description for specific information regarding the part.

Figure 1. How to Use the Illustrated Parts Breakdown (Sheet 1 of 2)

# HOW TO USE THE ILLUSTRATED PARTS BREAKDOWN



## WHEN THE PART NUMBER OF REFERENCE DESIGNATION IS KNOWN

- (1) WHEN THE PART NUMBER IS KNOWN, refer to the Numerical index. Locate the part number and note the figure and index number assigned to the part.
- (2) Turn to the figure indicated and locate the index number referenced in the Numerical Index.
- (3) If a pictorial representation of the part, or its location is desired, refer to the same index number on the accompanying illustration.
- (4) WHEN THE REFERENCE DESIGNATION IS KNOWN, refer to the Reference Designation Index. Locate the reference designation and note the figure and index number and the part number assigned.
- (5) Turn to the figure indicated and locate the index number referenced in the Reference Designation Index.
- (6) If a pictorial representation of the part, or its location is desired, refer to the same index number on the accompanying illustration.

Figure 1. How to Use the Illustrated Parts Breakdown (Sheet 2 of 2)



SECTION II  
 MAINTENANCE PARTS LIST

FIGURE & INDEX NUMBER	PART NUMBER	FSCM	DESCRIPTION 1 2 3 4 5 6 7	UNITS	USABLE	SMR
				PER ASSY	ON CODE	CODE
1-	3066650	72737	INDICATOR, VIDEO IP- 1354/TYQ	REF		PAODDT
-1	3066569	72737	. COVER, Top	1		XBFZZN
-2	MS24693C26	96906	. SCREW (AP)	28		PAFZZN
-3	3066570	72737	. COVER, Bottom	1		XBFZZN
-4	MS24693C26	96906	. SCREW (AP)	12		PAFZZN
-5	1600160	72737	. NAMEPLATE	1		MD- - - -
-6	2062213-15	72737	. NAMEPLATE	1		MD- - - -
-6A	MS20600AD4W2	81349	. RIVET (AP)	2		PADZZN
-7	2036298-15	72737	. NAMEPLATE	1		MD- - - -
-8	MS51957-13	96906	. SCREW (AP)	2		PAFZZN
	MS15795-804	96906	. FLATWASHER (AP)	2		PAFZZN
-9	3066561	72737	. CHASSIS ASSY (See Fig. 2 for detail parts)			

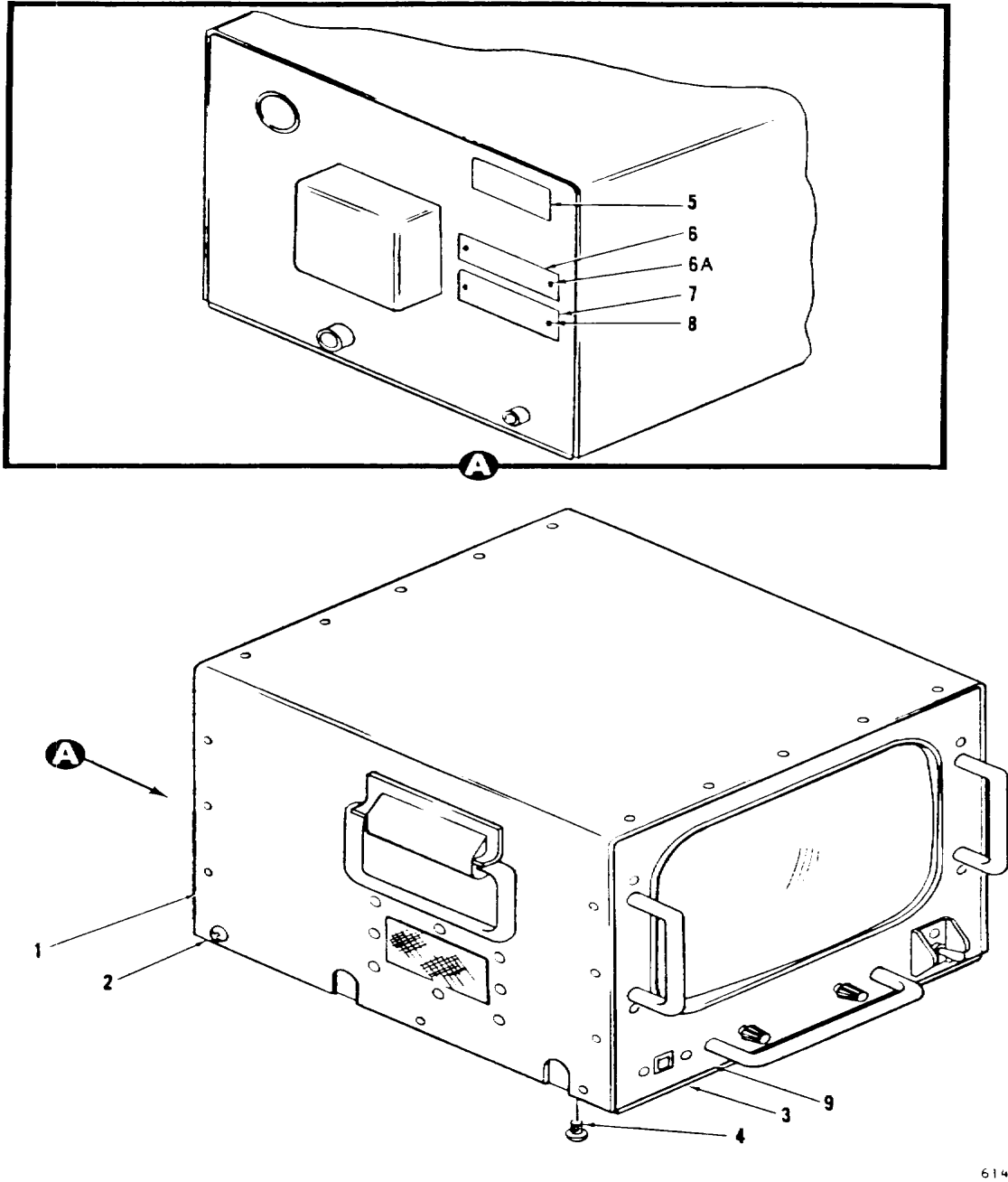
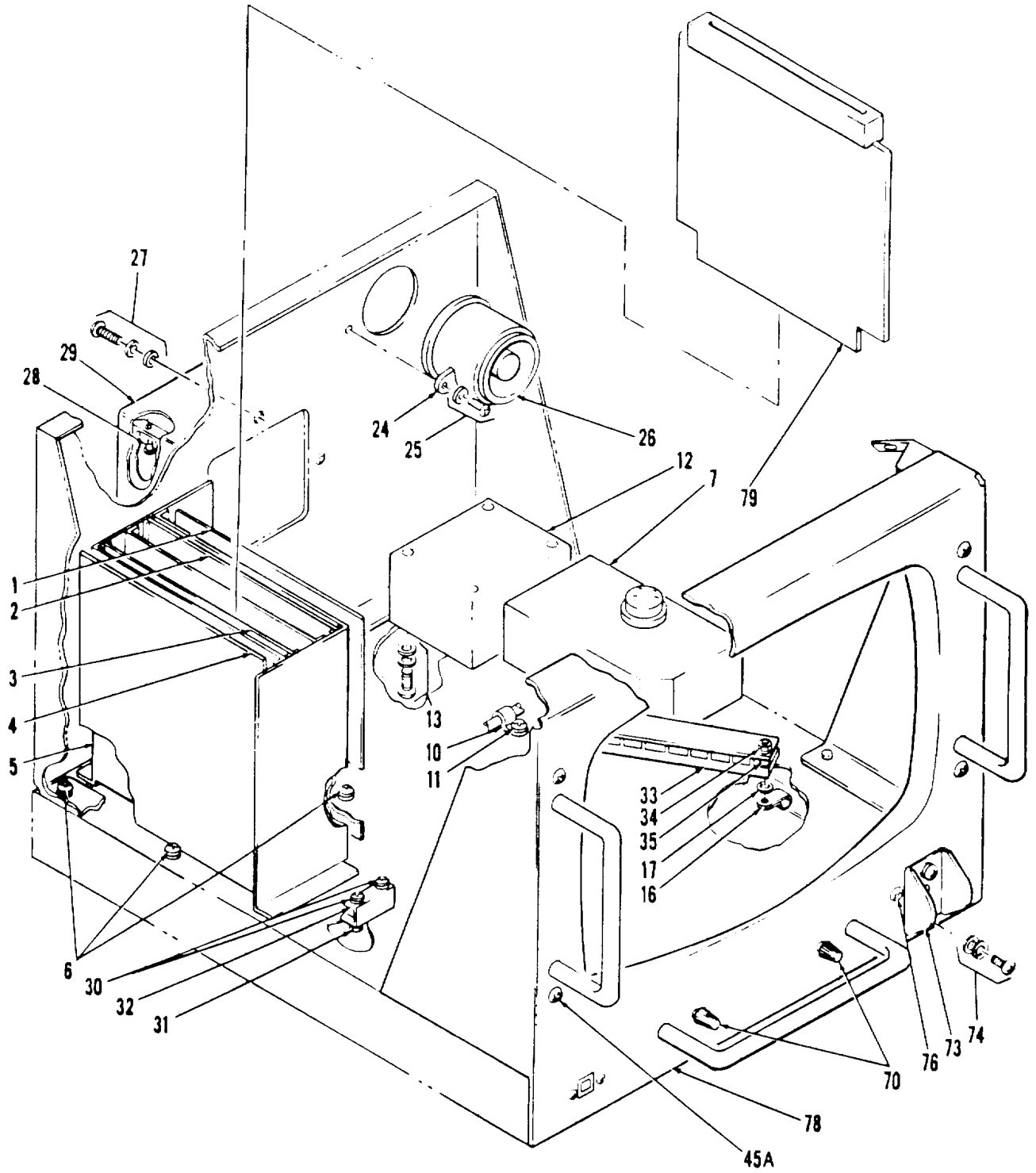
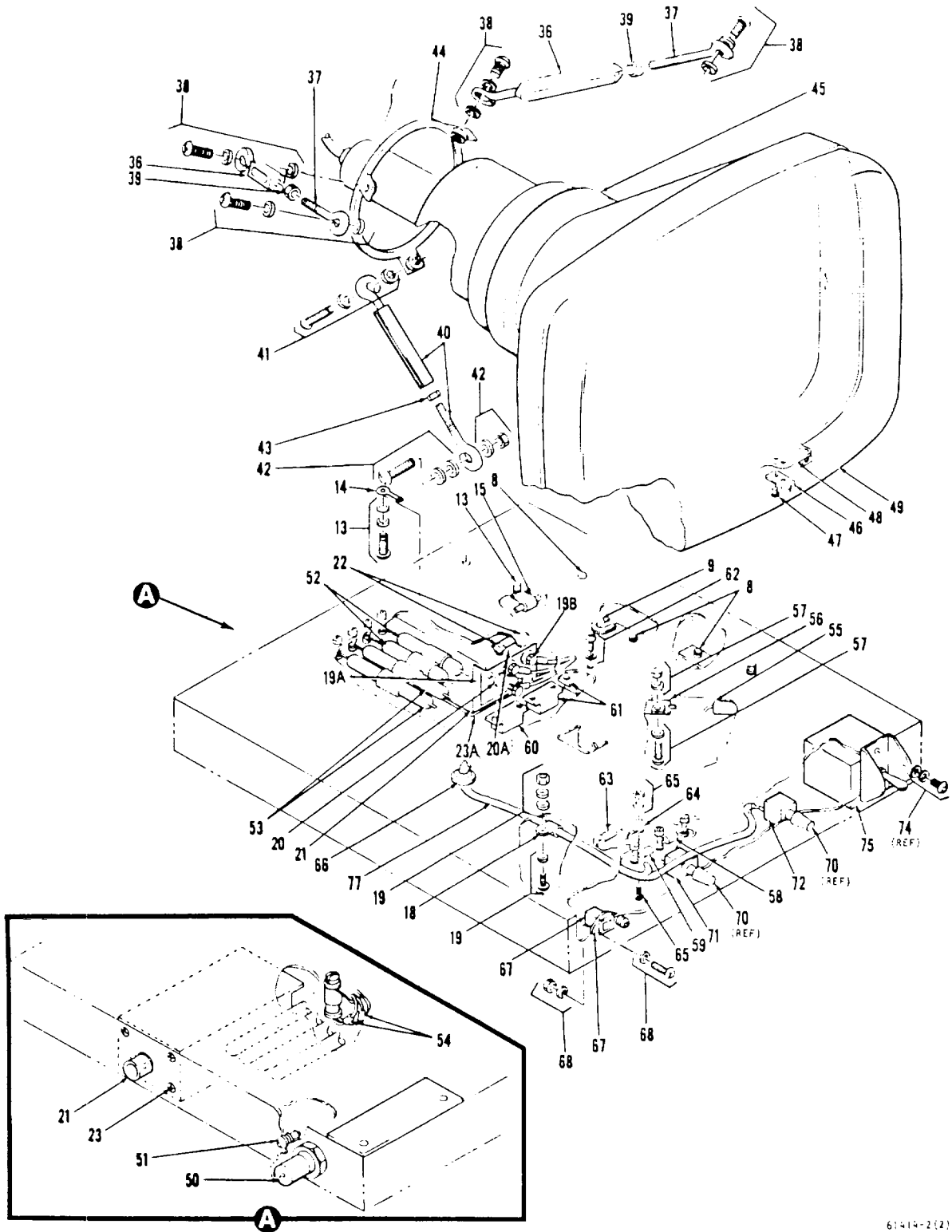


Figure 1. Indicator, Video IP-1354/TYQ



61414-2(1)

Figure 2. Chassis Assembly (Sheet 1 of 2)



61414-2(2)

Figure 2. Chassis Assembly (Sheet 2 of 2)

FIGURE & INDEX NUMBER	PART NUMBER	FSCM	DESCRIPTION	UNITS PER ASSY	USABLE ON CODE	SMR CODE
2-	3066561	72737	CHASSIS ASSY (See Fig. 1 for NHA)	REF		AFFDD-
-1	3066068-1	72737	. CIRCUIT CARD ASSY, LVPS A4 (See Fig. 3 for detail parts)	1		PAODDT
-2	3066064-1	72737	. CIRCUIT CARD ASSY, Video Amplifier A1 (See Fig. 4 for detail parts)	1		PAODDT
-3	3066056-1	72737	. CIRCUIT CARD ASSY, Vertical deflec- tion and sync A2 (See Fig. 5 for detail parts)	1		PAODDT
-4	3066060-1	72737	. CIRCUIT CARD ASSY, Horizontal de- flexion A3 (See Fig. 6 for detail parts)	1		PAODDT
-5	3066074-1	72737	. INTERCONNECT ASSY A7 (See Fig. 7 for detail parts)	1		ADDDD-
-6	MS51957-27	96906	. SCREW (AP)	4		PAFZZN
	MS35338-136	96906	. LOCKWASHER (AP)	4		PAFZZN
	MS15795-805	96906	. FLATWASHER (AP)	4		PAFZZN
-7	3066054-1	72737	. HIGH VOLTAGE POWER SUPPLY ASSY A5 (See Fig. 8 for detail parts)	1		PAODDT
-8	MS51957-28	96906	. SCREW (AP)	3		PAFZZN
	MS15795-805	96906	. FLATWASHER (AP)	3		PAFZZN
-9	MS21266-2N	96906	. GROMMET	1		PAFZZN
-10	3/16-2	95987	. CLAMP, Cable	1		XBFZZN
-11	NAS671C6	80205	. NUT (AP)	1		PAFZZN
	MS35338-136	96906	. LOCKWASHER (AP)	1		PAFZZN
	MS15795-805	96906	. FLATWASHER (AP)	1		PAFZZN
	D140	95987	. D WASHER, No. 6 (AP)	1		XBFZZN
-12	MS51957-29	96906	. SCREW (AP)	1		PAFZZN
	1800482	72737	. TRANSFORMER, Power (T1)	1		PADZZN

FIGURE & INDEX NUMBER	PART NUMBER	FSCM	DESCRIPTION	UNITS PER ASSY	USABLE ON CODE	SMR CODE
2-13	MS51957-28	96906	. SCREW (AP)	3		PADZZN
	MS51957-27	96906	. SCREW (AP)	1		PADZZN
	MS35338-136	96906	. LOCKWASHER (AP)	3		PADZZN
	MS15795-805	96906	. FLATWASHER (AP)	3		PADZZN
	D140	95987	. D WASHER, No. 6 (AP)	1		XBFZZN
-14	MS77068-2	96906	. LUG	1		PADZZN
-15	5/16-2	95987	. CLAMP, Cable	1		XBFZZN
-16	1/4	95987	. CLAMP, Cable (See Note 1)	2		XBFZZN
-17	D140	95987	. D WASHER, No. 6 (AP)	1		XBFZZN
-18	1/4-2	95987	. CLAMP, Cable	1		XBFZZN
-19	NAS671C6	80205	. NUT (AP)	1		PAFZZN
	MS35338-136	96906	. LOCKWASHER (AP)	1		PADZZN
	MS15795-805	96906	. FLATWASHER (AP)	1		PADZZN
	D140	95987	. D WASHER, No. 6 (AP)	1		XBFZZN
	MS51957-28	96906	. SCREW	1		PADZZN
-19A	3067637	72737	- SHIELD, Safety	1		PAFZZN
-19B	1800860-2	72737	. CAP, Nylon, hex	4		PAFZZN
-20	MS77070-5	96906	. LUG, Terminal	4		PAFZZN
-20A	3067640	72737	. LABEL, Caution	1		MA- - - -
-21	1800489	72737	. FILTER, EMI Input (J2)	1		PAFZZN
-22	NAS671C6	80205	. NUT (AP)	2		PAFZZN
	MS35338-136	96906	. LOCKWASHER (AP)	2		PADZZN
	MS5795-805	96906	. FLATWASHER (AP)	2		PADZZN
	MS51957-30	96906	. SCREW (AP)	2		PAFZZN
	MS24693C4	96906	. SCREW (AP)	4		PAFZZN
-23	3066643	72737	. SPACER	1		PAFZZN
-24	271166	82877	. CLAMP, Screw	3		PAFZZN
-25	MS51957-17	96906	. SCREW (AP)	3		PADZZN
-26	M515795-803	96906	. FLATWASHER (AP)	3		PADZZN
	3065251-2	72737	. FAN, Vaneaxial (B1)	1		PAFZZN
	3066641	72737	. COVER, CRT Rear	1		XBFZZN
-27	MS51957-15	96906	. SCREW (AP)	4		PAFZZN
	MS35338-135	96906	. LOCKWASHER (AP)	4		PADZZN
	MS15795-803	96906	. FLATWASHER (AP)	4		PADZZN
	MS20470A3-3	96906	. . RIVET	8		PADZZN
-29	3066641-101	72737	. . COVER	1		XA- - - -
	3066639	72737	. BRACKET, Connector mounting	1		XBFZZN
-30	MS51957-78	96906	. SCREW (AP)	2		PAFZZN
	MS35338-136	96906	. LOCKWASHER (AP)	2		PAFZZN
	M515795-805	96906	. FLATWASHER (AP)	2		PAFZZN
-31	CLS632-2	46384	. . NUT, Clinch	2		PAFZZN
-32	3066639-101	72737	. . BRACKET	1		XBFZZN

1 All attaching hardware, except item 17, are supplied with clamp.

FIGURE & INDEX NUMBER	PART NUMBER	FSCM	DESCRIPTION	UNITS PER ASSY	USABLE ON CODE	SMR CODE
2-33	3066573	72737	. SHIELD, Terminal	1		PAFZZN
-34	NAS671C6	80205	. NUT (AP)	2		PAFZZN
	MS35338-136	96906	. LOCKWASHER (AP)	2		PADZZN
	M515795-805	96906	. FLATWASHER (AP)	2		PADZZN
	MS51957-35	96906	. SCREW (AP)	2		PAFZZN
-35	8212A0632	06540	. STANDOFF	2		PAFZZN
-36	3066642	72737	. TURNBUCKLE	2		XBFZZN
-37	2160-1/4X5	82851	. EYEBOLT	2		XBDZZN
-38	MS51958-64	96906	. SCREW	4		PAFZZN
	MS15795-813	96906	. FLATWASHER	2		PAFZZN
	MS15795-811	96906	. FLATWASHER	4		PAFZZN
-39	MS35649-2254	96906	. NUT	2		PAFZZN
-40	3066636	72737	. TURNBUCKLE	1		XBDZZN
-41	MS51958-64	96906	. SCREW (AP)	1		PAFZZN
	MS15795-813	96906	. FLATWASHER (AP)	1		PAFZZN
	MS15795-811	96906	. FLATWASHER (AP)	1		PAFZZN
-42	MS21044C3	96906	. NUT (AP)	1		PAFZZN
	MS35338-138	96906	. LOCKWASHER (AP)	1		PAFZZN
	MS15795-811	96906	. FLATWASHER (AP)	3		PAFZZN
	MS51958-65	96906	. SCREW (AP)	1		PAFZZN
-43	MS35649-204	96906	. NUT	1		PAFZZN
-44	3066571	72737	. BRACKET, Yoke ring	1		XBDZZN
-45	3066577	72737	. YOKE ASSY (L1) (See Fig. 10 for detail parts)	1		ADDDD-
	3066565	72737	. STRAP, CRT Mounting	1		XBDZZN
-45A	MS51958-69	96906	. SCREW (AP)	4		PAFZZN
-46	22NA27-22-02	22599	. . NUT, Anchor	4		XBDZZN
-47	MS20470A3-3	96906	. . RIVET (AP)	19		PADZZN
-48	3066565-1	72737	. . STRAP	1		XBDZZN
-49	3067599	72737	. TUBE, Cathode ray (Vi)	1		PADZZN
-50	33224-1	95712	. COVER, Dust	1		PAFZZN
-51	NAS671C6	80205	. NUT (AP)	1		PAFZZN
	M535338-136	96906	. LOCKWASHER (AP)	1		PADZZN
	MS15795-805	96906	. FLATWASHER (AP)	1		PADZZN
	MS51957-27	96906	. SCREW (AP)	1		PAFZZN
-52	M39006/01-3079	S1349	. CAPACITOR (C1,2)	2		PAFZZN
-53	M39006/01-3075	81349	. CAPACITOR (C3,4)	2		PAFZZN
-54	M39014/02-1419	81349	. CAPACITOR (C6,7)	2		PAFZZN
-55	CQR29A1ME154- K3M	81349	. CAPACITOR (C5)	1		PAFZZN
-56	RER65F6040R	81349	. RESISTOR (R11)	1		PAFZZN
-57	MS35649-224	96906	. NUT (AP)	4		PAFZZN
	MS35338-134	96906	. LOCKWASHER (AP)	2		PAFZZN
	NAS62OC2	80205	. FLATWSHER (AP)	4		PAFZZN
	MS51957-5	96906	. SCREW (AP)	2		PAFZZN
-58	RCR20G104JS	81349	. RESISTOR (R5)	1		PAFZZN
-59	RCR20G102JS	81349	. RESISTOR (R6)	1		PAFZZN

FIGURE & INDEX NUMBER	PART NUMBER	FSCM	DESCRIPTION	UNITS PER ASSY	USABLE ON CODE	SMR CODE
2-60	3065249-2	72737	. RECTIFIER, Bridge (CR1)	1		PAFZZN
-61	3065249-1	72737	. RECTIFIER, Bridge	2		PAFZZN
-62	MS51957-15	96906	. SCREW	6		PAFZZN
	MS35338-135	96906	. LOCKWASHER (AP)	6		PADZZN
	MS15795-805	96906	. FLATWASHER (AP)	6		PADZZN
-63	3065254-2001-7	72737	. PROTECTOR, Surge (E101)	1		PADZZN
-64	MS77070-2	96906	. LUG, Terminal	1		PAFZZN
-65	NAS671C6	80205	. NUT (AP)	1		PAFZZN
	MS15795-805	80205	. FLATWASHER (AP)	1		PADZZN
	MS51957-27	96906	. SCREW (AP)	1		PAFZZN
-66	MS35489-35	96906	. GROMMET	1		PAFZZN
-67	M517322-10	96906	. METER (M1)	1		PAFZZN
-68	NAS671C4	80205	. NUT (AP)	2		PAFZZN
	MS35338-135	96906	. LOCKWASHER (AP)	2		PADZZN
	NAS62OC4L	80205	. FLATWASHER (AP)	2		PAFZZN
	MS24693C4	96906	. SCREW (AP)	2		PAFZZN
-69	Not Used					
-70	020-122	98291	. KNOB	2		PAFZZN
-71	3862C282-504A	80294	. RESISTOR, Vari- able, 500K (R3)	1		PAFZZN
-72	3862C282-102A	80294	. RESISTOR, Vari- able, 1K (R4) t	1		PAFZZN
-73	3066576	72737	. GUARD, Switch	1		PAFZZN
-74	MS51957-12	96906	. SCREW (AP)	2		PAFZZN
	MS35338-135	96906	. LOCKWASHER (AP)	2		PADZZN
	NAS62OC4L	80205	. FLATWASHER (AP)	2		PAFZZN
-75	M39019/6-20	81349	. CIRCUIT BREAKER (CB1)	1		PAFZZN
-76	MS51957-28	96906	. SCREW (AP)	2		PAFZZN
	MS35338-136	96906	. LOCKWASHER (AP)	2		PAFZZN
	MS15795-806	96906	. FLATWASHER (AP)	2		PAFZZN
-77	3066633	72737	. HARNESS ASSY (See Fig. 11 for detail parts)	1		AFFDD-
-78	3066562	72737	. CHASSIS SUBASSY (See Fig. 12 for detail parts)	1		XBFZZN
-79	3066680	72737	. EXTENDER ASSY, Circuit card	1		-----
			<b>2-8</b>			



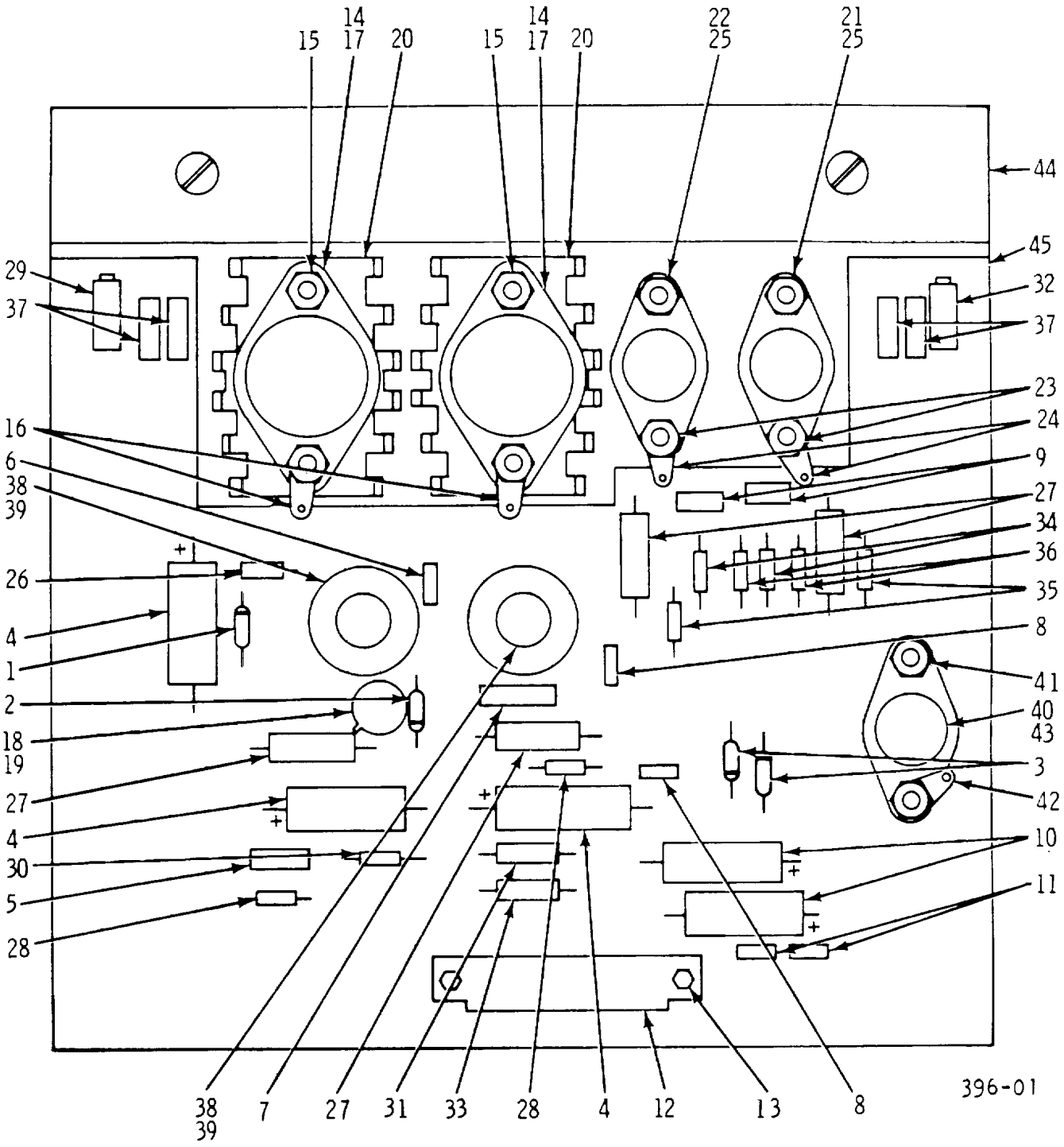


Figure 3. Circuit Card Assembly, LVPS A4

FIGURE & INDEX NUMBER	PART NUMBER	FSCM	DESCRIPTION	UNITS PER ASSY	USABLE ON CODE	SMR CODE
3-	3066068-1	72737	CIRCUIT CARD ASSY, LVPS A4 (See Fig. 2 for NHA)	REF		PAODDT
-1	JAN1N6122	81349	. DIODE (CR1)	1		PADZZN
-2	JAN1N4454-1	81349	. DIODE (CR2)	1		PADZZN
-3	JAN1N6117	81349	. DIODE (CR3,4)	2		PADZZN
-4	M39003/01-2620	81349	. CAPACITOR (C1,2, 5)	3		PADZZN
-5	M39014/01-1501	81349	. CAPACITOR (C3)	1		PADZZN
-6	M39014/01-1513	81349	. CAPACITOR (C4)	1		PADZZN
-7	CMRO6F561JPDM	81349	. CAPACITOR (C6)	1		PADZZN
-8	M39014/02-1411	81349	. CAPACITOR (C7,15)	2		PADZZN
-9	CMRO5F221JPDM	81349	. CAPACITOR (Cs,12)	2		PADZZN
-10	M39003/01-2546	81349	. CAPACITOR (C9,16)	2		PADZZN
-11	M39014/01-1280	81349	. CAPACITOR (C13, 14)	2		PADZZN
-12	M55302/57A20X	81349	. CONNECTOR (P5)	1		PADZZN
-13	NA5671C4	80205	. NUT (AP)	2		PADZZN
	NAS62OC4L	80205	. FLATWASHER (AP)	2		PADZZN
	MS35338-135	96906	. LOCKWASHER (AP)	2		PADZZN
	MS51957-15	96906	. SCREW (AP)	2		PADZZN
-14	JANTX2N3442	81349	. TRANSISTOR (Q1,3)	2		PADZZN
-15	MS35649-244	96906	. NUT (AP)	4		PADZZN
	MS35338-135	96906	. LOCKWASHER (AP)	2		PADZZN
	MS15795-803	96906	. FLATWASHER (AP)	6		PADZZN
	M551957-18	96906	. SCREW (AP)	4		PADZZN
-16	M577068-1	96906	. LUG, Terminal	2		PADZZN
-17	7403-10-03	55285	. INSULATOR, T03	4		PADZZN
-18	JANTX2N2222A	81349	. TRANSISTOR (Q2)	1		PADZZN
-19	M38527/1-25N2	81349	. INSULATOR	1		PADZZN
-20	LAT03B5CB	98978	. HEAT SINK	2		PADZZN
-21	JAN2N3741	81349	. TRANSISTOR (Q4)	1		PADZZN
-22	JANTX2N3441	81349	. TRANSISTOR (Q5)	1		PADZZN
-23	MS35649-244	96906	. NUT (AP)	4		PADZZN
	MS35338-135	96906	. LOCKWASHER (AP)	2		PADZZN
	MS15795-803	96906	. FLATWASHER (AP)	6		PADZZN
	MS51957-17	96906	. SCREW (AP)	4		PADZZN
-24	MS77068-1	96906	. LUG, Terminal	2		PADZZN
-25	7403-09FR11	08289	. INSULATOR	2		PADZZN
-26	RCR07G33OJS	81349	. RESISTOR (R1)	1		PADZZN
-27	RIR89SR681FM	81349	. RESISTOR (R2,6, 11,18)	4		PADZZN
-28	RCR07G562JS	81349	. RESISTOR (R3,8)	2		PADZZN
-29	RJR24FX504M	81349	. RESISTOR, Vari- able (R4)	1		PADZZN
-30	RNC6OH1823FS	81349	. RESISTOR (R5)	1		PADZZN
-31	RNC60H1002FS	81349	. RESISTOR (R7)	1		PADZZN
-32	M39015/3-OO8XM	81349	. RESISTOR, Vari- able (R9)	1		PADZZN
			<b>2-10</b>			

FIGURE & INDEX NUMBER	PART NUMBER	FSCM	DESCRIPTION	UNITS PER ASSY	USABLE ON CODE	SMR CODE
3-33	RNC6OH4021FS	81349	. RESISTOR, (R10)	1		PADZZN
-34	RCR07G47OJS	81349	. RESISTOR (R12,15)	2		PADZZN
-35	RCR07G222JS	81349	. RESISTOR (R13,17)	2		PADZZN
-36	RCR07G10OJS	81349	. RESISTOR (R14,16)	2		PADZZN
-37	M39024/11-01	81349	. TEST POINT (TPI-4)	4		PADZZN
-38	M38510/10201B1A	81349	. MICROCIRCUIT (U1, 2)	2		PADZZN
-39	M38527/1-28N2	81349	. INSULATOR	2		PADZZN
-40	1568B2XJC	04713	. MICROCIRCUIT, Dual +15 Vdc regula- tor (U3)	1		PADZZN
-41	MS35649-244	96906	. NUT (AP)	2		PADZZN
	MS35338-135	96906	. LOCKWASHER (AP)	1		PADZZN
	MS15795-803	96906	. FLATWASHER (AP)	3		PADZZN
	MS51957-15	96906	. SCREW (AP)	2		PADZZN
-42	MS77068-1	96906	. LUG, Terminal	1		PADZZN
-43	43-66-9	13103	. INSULATOR	1		PADZZN
-44	3066071-1	72737	. HEAT SINK	1		XBDZZN
-45	3066069-2	72737	. BOARD, Printed circuit	1		XA- - - -

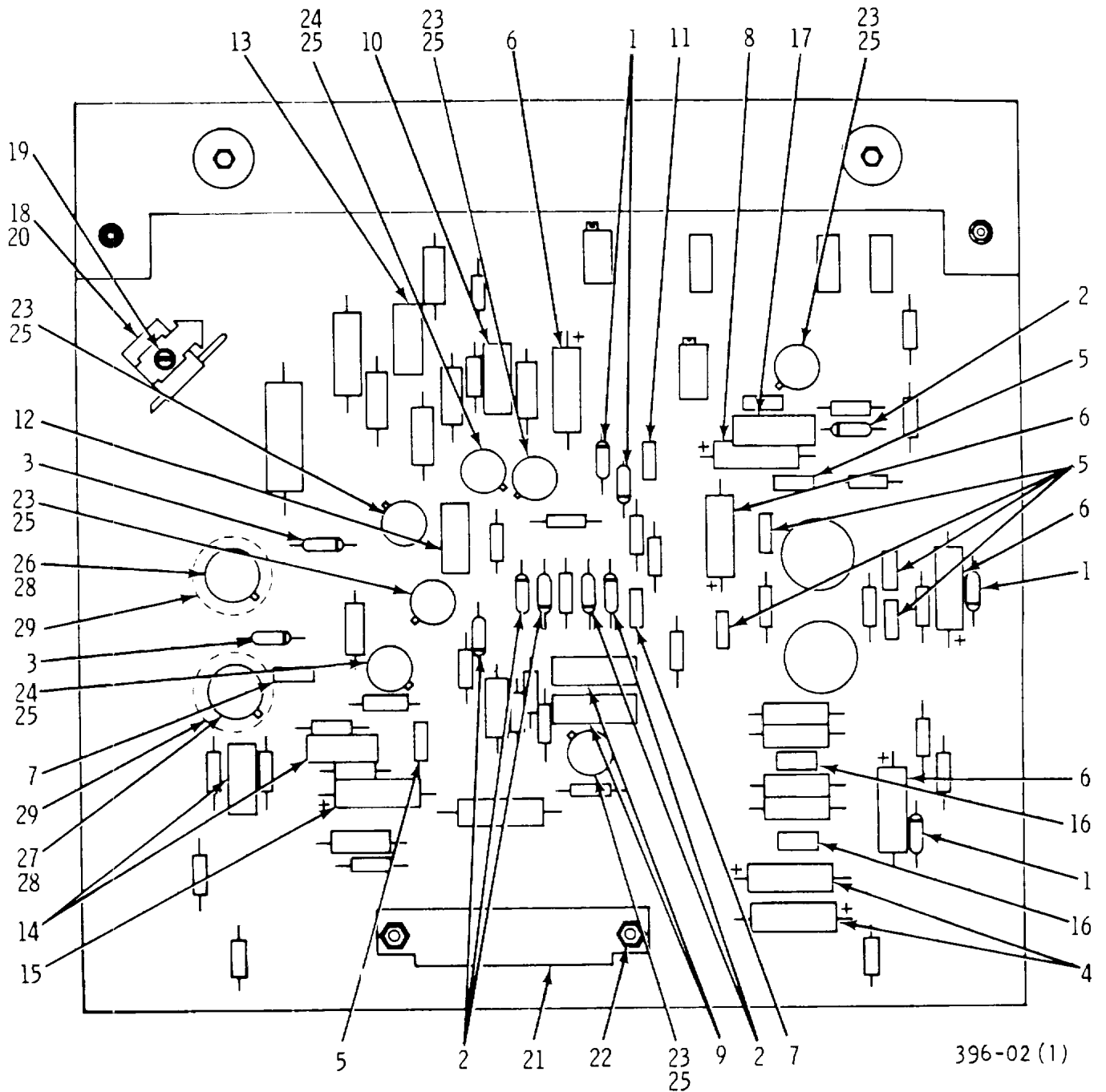


Figure 4. Circuit Card Assembly, Video Amplifier AI (Sheet 1 of 2)

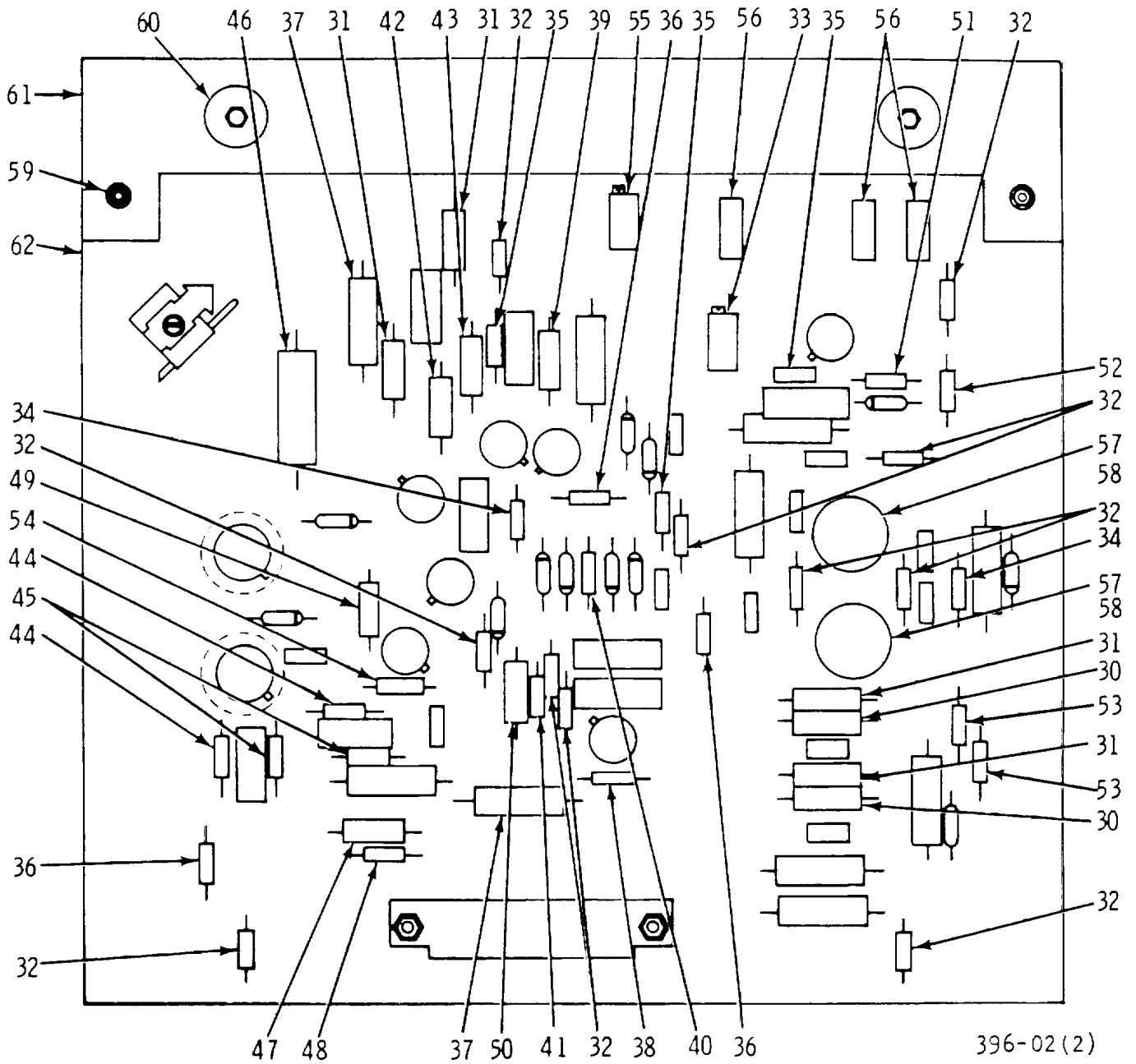


Figure 4. Circuit Card Assembly, Video Amplifier A1 (Sheet 2 of 2)

FIGURE & INDEX NUMBER	PART NUMBER	FSCM	DESCRIPTION 1 2 3 4 5 6 7	UNITS PER ASSY	USABLE ON CODE	SMR CODE
4-	3066064-1	72737	CIRCUIT CARD ASSY, Video amplifier A1 (See Figure 2 for NHA)	REF		PAODDT
-1	JANTX1N751A	81349	. DIODE (CR1,2,4, 5)	4		PADZZN
-2	JAN1N4454-1	81349	. DIODE (CR6-9,15, 17)	6		PADZZN
-3	JANTXIN756A	81349	. DIODE (CR11,12)	2		PADZZN
-4	M39003/01-2529	81349	. CAPACITOR (C1,2)	2		PADZZN
-5	M39014/02-1270	81349	. CAPACITOR (C4,5, 11,12,14,24)	6		PADZZN
-6	M39003/01-2543	81349	. CAPACITOR (C6,7, 13,19)	4		PADZZN
-7	M39014/01-1489	81349	. CAPACITOR (C15, 25)	2		PADZZN
-8	M39003/01-2526	81349	. CAPACITOR (C16)	1		PADZZN
-9	CMR06F1O2JPDM	81349	. CAPACITOR (C17, 18)	2		PADZZN
-10	CMR05F111JPDM	81349	. CAPACITOR (C20)	1		PADZZN
-11	M39014/02-1280	81349	. CAPACITOR (C21)	1		PADZZN
-12	CMR05F151JPDM	81349	. CAPACITOR (C22)	1		PADZZN
-13	CMR05E33OJPDM	81349	. CAPACITOR (C23)	1		PADZZN
-14	CMR05F301JPDM	81349	. CAPACITOR (C26, 27)	2		PADZZN
-15	M39003/01-2705	81349	. CAPACITOR (C28)	1		PADZZN
-16	CMR03C3RODO- CM	81349	. CAPACITOR (C29, 30)	2		PADZZN
-17	CMR06F431JPDM	81349	. CAPACITOR (C31)	1		PADZZN
-18	JFA1S1P-A	81312	. CONNECTOR (J11)	1		PADZZN
-19	NAS671C2	80205	. NUT (AP)	1		PADZZN
	NAS62OC2	80205	. FLAT WASHER (AP)	2		PADZZN
	MS35333-69	96906	. LOCKWASHER (AP)	1		PADZZN
	MS51959-6	96906	. SCREW (AP)	1		PADZZN
-20	3066034	72737	. RETAINER, Connec- tor	1		PADZZN
-21	M55302/57A20X	81349	. CONNECTOR (P2)	1		PADZZN
-22	NA5671C4	80205	. NUT (AP)	2		PADZZN
	NAS62OC4L	80205	. FLATWASHER (AP)	2		PADZZN
	MS35338-135	96906	. LOCKWASHER (AP)	2		PADZZN
	MS51957-16	96906	. SCREW (AP)	2		PADZZN
-23	JANTX2N2222A	81349	. TRANSISTOR (Q1, 5,6,8,12)	5		PADZZN
-24	JAN2N3251A	81349	. TRANSISTOR (Q7, 9)	2		PADZZN
-25	A18	15199	. INSULATOR	7		PADZZN
-26	JAN2N3637	81349	. TRANSISTOR (Q10)	1		PADZZN
-27	JANTX2N3501	81349	. TRANSISTOR (Q11)	1		PADZZN
-28	UM5	15199	. INSULATOR	2		PADZZN

FIGURE & INDEX NUMBER	PART NUMBER	FSCM	DESCRIPTION	UNITS PER ASSY	USABLE ON CODE	SMR CODE
4-29	TXBF032-025B	98978	. HEAT SINK	2		PADZZN
-30	RNC60H1002FS	81349	. RESISTOR (R2,3)	2		PADZZN
-31	RNC60H1001FS	81349	. RESISTOR (R4,5, 41 ,42)	4		PADZZN
-32	RCR07GI02JS	81349	. RESISTOR (R6,7, 17,24,25,29, 30,44,59,65,66)	11		PADZZN
-33	RJR24FX201P	81349	. RESISTOR, Vari- able (R8)	1		PADZZN
-34	RCR07G470Js	81349	. RESISTOR (R9,40)	2		PADZZN
-35	RCR07G562Js	81349	. RESISTOR (R11, 33,36)	3		PADZZN
-36	RCR07G101JS	81349	. RESISTOR (R22,37, 50)	3		PADZZN
-37	RCR32G560Js	81349	. RESISTOR (R27,31)	2		PADZZN
-38	RCR07G223JS	81349	. RESISTOR (R28)	1		PADZZN
-39	RNC60H4020FS	81349	. RESISTOR (R32)	1		PADZZN
-40	RCR07G103JS	81349	. RESISTOR (R34)	1		PADZZN
-41	RCR07G222JS	81349	. RESISTOR (R35)	1		PADZZN
-42	RNC60G121OFS	81349	. RESISTOR (R38)	1		PADZZN
-43	RNC60G825OFS	81349	. RESISTOR (R39)	1		PADZZN
-44	RCR07G471JS	81349	. RESISTOR (R45,46)	2		PADZZN
-45	RCR07G121JS	81349	. RESISTOR (R47,48)	2		PADZZN
-46	RNC70R1212FS	81349	. RESISTOR (R49)	1		PADZZN
-47	RCR20G391JS	81349	. RESISTOR (R51)	1		PADZZN
-48	RCR07GI04JS	81349	. RESISTOR (R52)	1		PADZZN
-49	RNC60H3322FS	81349	. RESISTOR (R56)	1		PADZZN
-50	RNC60H3321FS	81349	. RESISTOR (R58)	1		PADZZN
-51	RCR07G821JS	81349	. RESISTOR (R61)	1		PADZZN
-52	RCR07G332JS	81349	. RESISTOR (R62)	1		PADZZN
-53	RCR07G100JS	81349	. RESISTOR (R63,64)	2		PADZZN
-54	RCR32G153JS	81349	. RESISTOR (R67)	1		PADZZN
-55	RJR24FX202M	81349	. RESISTOR, Vari- able (R103)	1		PADZZN
-56	M39024/11-01	81349	. TEST POINT (TP1-3)	3		PADZZN
-57	3065275-01B1A	72737	. MICROCIRCUIT, Wideband amp (U1,3)	2		PADZZN
-58	7717-119	13103	. INSULATOR	2		XBDZZN
	3066067-2	72737	. HANDLE, Video	1		XBDZZN
-59	NAS671C4	96906	. NUT (AP)	2		PADZZN
	NAS62OC4L	80205	. FLATWASHER (AP)	4		PADZZN
	MS35338-135	96906	. LOCKWASHER (AP)	2		PADZZN
	MS51957-15	96906	. SCREW (AP)	2		PADZZN
-60	LAC440-2	46384	. . NUT, Self locking	2		PADZZN
-61	3066067-101	72737	. . HEAT SINK	1		XA----
-62	3066065-2	72737	. BOARD, Printed wiring	1		XA----
			<b>2-15</b>			

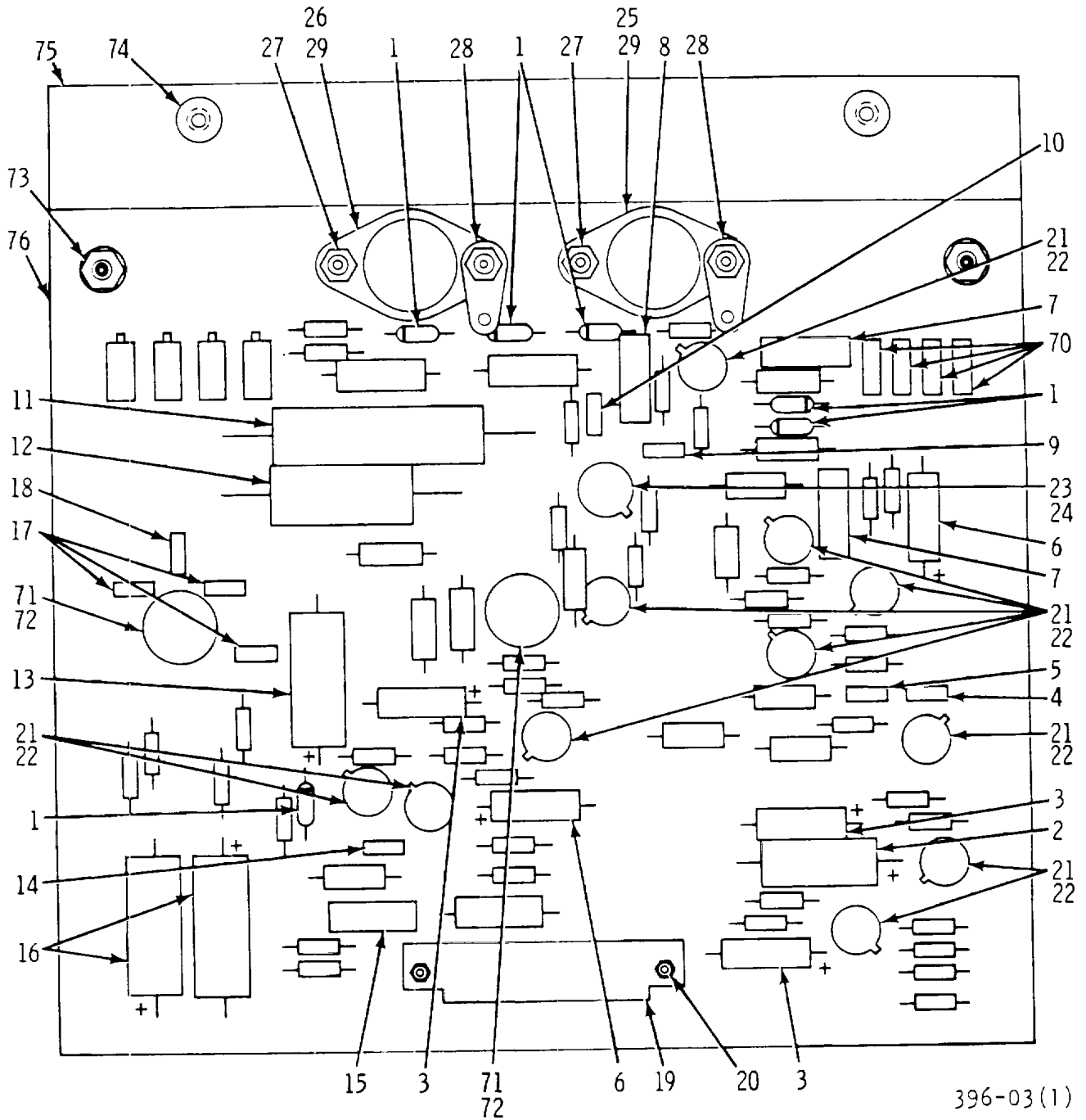


Figure 5. Circuit Card Assembly, Vertical Deflection and Sync A2  
 (Sheet 1 of 2)



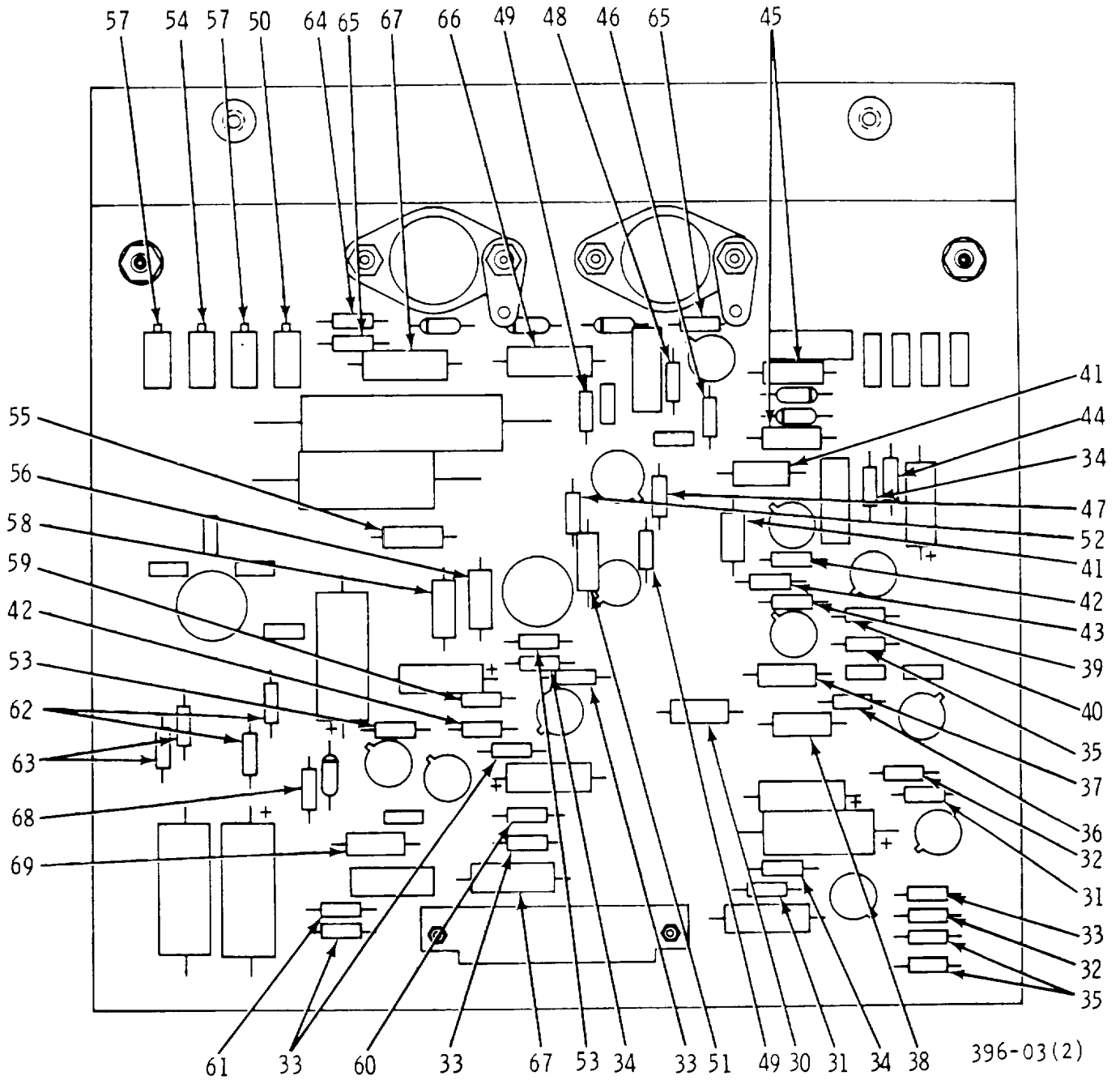
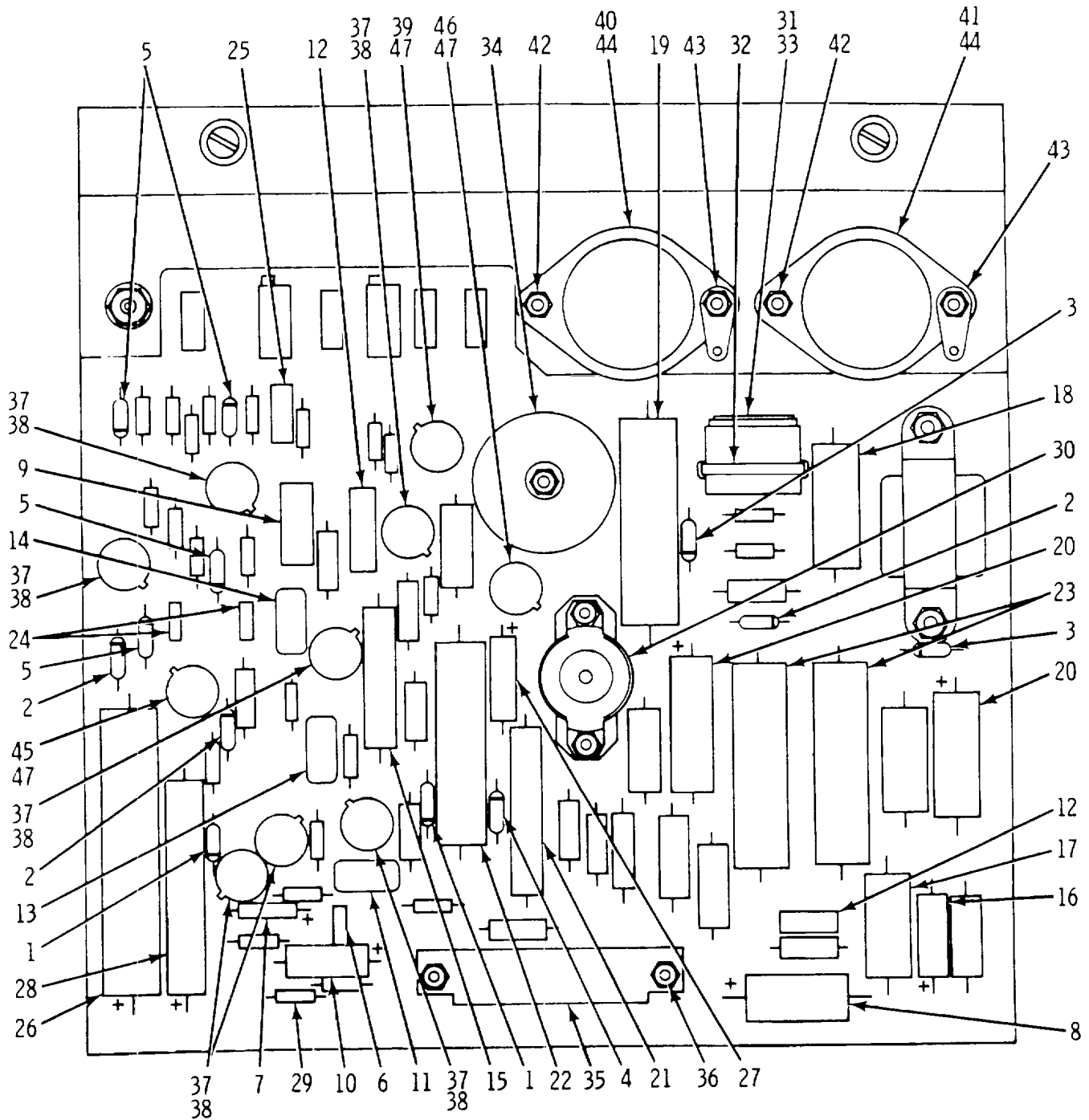


Figure 5. Circuit Card Assembly, Vertical Deflection and Sync A2  
(Sheet 2 of 2)

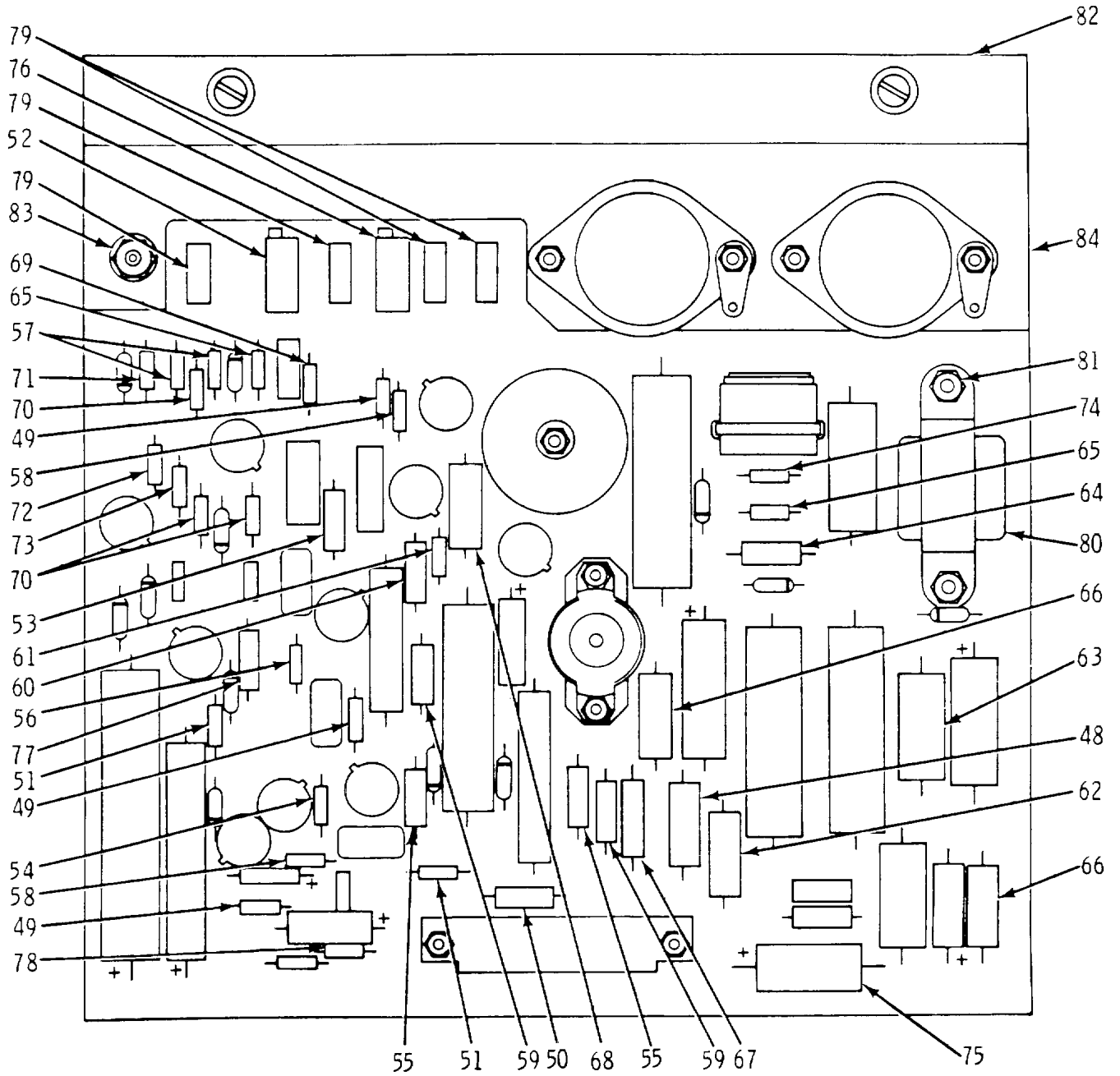
FIGURE & INDEX NUMBER	PART NUMBER	FSCM	DESCRIPTION	UNITS PER ASSY	USABLE ON CODE	SMR CODE
5-	3066056-1	72737	CIRCUIT CARD ASSY, Vertical deflection and sync A2 (See Fig. 2 for NHA)	REF		PAODDT
-1	JAN1N4454-1	81349	. DIODE (CR1-6)	6		PADZZN
-2	M39003/01-2535	81349	. CAPACITOR (C1)	1		PADZZN
-3	M39003/01-2511	81349	. CAPACITOR (C2,3,15)	3		PADZZN
-4	M39014/02-1276	81349	. CAPACITOR (C4)	1		PADZZN
-5	M39014/02-1272	81349	. CAPACITOR (C5)	1		PADZZN
-6	M39003/01-2604	81349	. CAPACITOR (C6,18)	2		PADZZN
-7	CMR06F102FPDM	81349	. CAPACITOR (C7,8)	2		PADZZN
-8	CMR06F202JPDM	81349	. CAPACITOR (C9)	1		PADZZN
-9	M39014/02-1252	81349	. CAPACITOR (C10)	1		PADZZN
-10	M39014/02-1280	81349	. CAPACITOR (C11)	1		PADZZN
-11	CQR29A1MA684K3P	81349	. CAPACITOR (C12)	1		PADZZN
-12	CQR29A1MA224K3P	81349	. CAPACITOR (C13)	1		PADZZN
-13	M39003/01-2620	81349	. CAPACITOR (C14)	1		PADZZN
-14	M39014/02-1411	81349	. CAPACITOR (C16)	1		PADZZN
-15	CMR06F561JPDM	81349	. CAPACITOR (C17)	1		PADZZN
-16	M39003/01-2541	81349	. CAPACITOR (C19,20)	2		PADZZN
-17	M39014/02-1270	81349	. CAPACITOR (C21-23)	3		PADZZN
-18	CMR05F181JPDM	81349	. CAPACITOR (C24)	1		PADZZN
-19	M55302/57A20X	81349	. CONNECTOR (P3)	1		PADZZN
-20	NAS671C4	80205	. NUT (AP)	2		PADZZN
	NAS620C4L	80205	. FLATWASHER (AP)	2		PADZZN
	MS35338-135	96906	. LOCKWASHER (AP)	2		PADZZN
	MS51957-15	96906	. SCREW (AP)	2		PADZZN
-21	JANTX2N2222A	81349	. TRANSISTOR (Q1-7,9-12)	11		PADZZN
-22	A18	15199	. INSULATOR	11		PADZZN
-23	JAN2N491A	03508	. TRANSISTOR (Q8)	1		PADZZN
-24	1JM5	15199	. INSULATOR	1		PADZZN
-25	2N6294	04713	. TRANSISTOR (Q13)	1		PADZZN
-26	2N6296	04713	. TRANSISTOR (Q14)	1		PADZZN
-27	M535649-244	96906	. NUT (AP)	4		PADZZN
	MS35333-70	96906	. LOCKWASHER (AP)	2		PADZZN
	M515795-803	96906	. FLATWASHER (AP)	6		PADZZN
	MS51957-17	96906	. SCREW (AP)	4		PADZZN
-28	MS77070-1	96906	. LUG, Terminal	2		PADZZN
-29	43-66-2	13103	. INSULATOR	2		PADZZN
-30	RCR20G330JS	81349	. RESISTOR (R1)	1		PADZZN
-31	RCR07G683JS	81349	. RESISTOR (R2,8)	2		PADZZN
-32	RCR07G333JS	81349	. RESISTOR (R3,9)	2		PADZZN
-33	RCR07G102JS	81349	. RESISTOR (R4,34,43,44,46)	5		PADZZN
-34	RCR07G222JS	81349	. RESISTOR (R5,20,33)	3		PADZZN
-35	RCR07G331JS	81349	. RESISTOR (R6,7,11)	3		PADZZN
			<b>2-18</b>			

FIGURE & INDEX NUMBER	PART NUMBER	FSCM	DESCRIPTION	UNITS PER ASSY	USABLE ON CODE	SMR CODE
5-36	RCR07G682JS	81349	. RESISTOR (R10)	1		PADZZN
-37	RNC60H1002FS	81349	. RESISTOR (R12)	01		PADZZN
-38	RNC60H2263FS	81349	. RESISTOR (R13)	1		PADZZN
-39	RCR07G822JS	81349	. RESISTOR (R14)	1		PADZZN
-40	RCR07G223JS	81349	. RESISTOR (R15)	1		PADZZN
-41	RNC60H1001FS	81349	. RESISTOR (R16,19)	2		PADZZN
-42	RCR07G473JS	81349	. RESISTOR (R17,41)	2		PADZZN
-43	RCR07G111JS	81349	. RESISTOR (R18)	1		PADZZN
-44	RCR07G562JS	81349	. RESISTOR (R21)	1		PADZZN
-45	RNC60H1003FS	81349	. RESISTOR (R22,23)	2		PADZZN
-46	RCR07G153JS	81349	. RESISTOR (R24)	1		PADZZN
-47	RCR07G391JS	81349	. RESISTOR (R25)	1		PADZZN
-48	RCR07G224JS	81349	. RESISTOR (R26)	1		PADZZN
-49	RCR07G111JS	81349	. RESISTOR (R27,28)	2		PADZZN
-50	RJR24FX254M	81349	. RESISTOR, Vari- able (R29)	1		PADZZN
-51	RNC60H1543FS	81349	. RESISTOR (R30)	1		PADZZN
-52	RCR07G2R7JS	81349	. RESISTOR (R31)	1		PADZZN
-53	RCR07G393JS	81349	. RESISTOR (R32,40)	2		PADZZN
-54	RJR24FX203M	81349	. RESISTOR, Vari- able (R35)	1		PADZZN
-55	RNC60H1542FS	81349	. RESISTOR (R36)	1		PADZZN
-56	RNC60H1781FS	81349	. RESISTOR (R37)	1		PADZZN
-57	M39015/3-007XM	81349	. RESISTOR, Vari- able (R38,52)	2		PADZZN
-58	RNC60H3321FS	81349	. RESISTOR (R39)	1		PADZZN
-59	RCR07G332JS	81349	. RESISTOR (R42)	1		PADZZN
-60	RCR07G104JS	81349	. RESISTOR (R45)	1		PADZZN
-61	RCR07G561JS	81349	. RESISTOR (R47)	1		PADZZN
-62	RCR07G471JS	81349	. RESISTOR (R48,50)	2		PADZZN
-63	RCR07GI23JS	81349	. RESISTOR (R49,51)	2		PADZZN
-64	RNC60H8250FS	81349	. RESISTOR (R53)	1		PADZZN
-65	RCR07G103JS	81349	. RESISTOR (R54,55)	2		PADZZN
-66	RCR20G2R7JS	81349	. RESISTOR (R56)	1		PADZZN
-67	RWR89SR825FM	81349	. RESISTOR (R57,60)	2		PADZZN
-68	RCR07G823JS	81349	. RESISTOR (R58)	1		PADZZN
-69	RNC60HI471FS	81349	. RESISTOR (R59)	1		PADZZN
-70	M39024/11-01	81349	. TEST POINT (TP1-4)	4		PADZZN
-71	M38510/10101BGA	81349	. MICROCIRCUIT (U1, 2)	2		PADZZN
-72	7717-107	13103	. INSULATOR	2		PADZZN
	3066059	72737	. HEAT SINK ASSY	1		XBDZZN
-73	MS35649-244	96906	. NUT (AP)	2		PADZZN
	MS35338-135	96906	. LOCKWASHER (AP)	2		PADZZN
	MS15795-803	96906	. FLATWASHER (AP)	4		PADZZN
	MS51957-15	96906	. SCREW (AP)	2		PADZZN
-74	LAC440-2	46384	. . NUT, Self-lock	1		PADZZN
-75	3066059-1	72737	. . HEAT SINK	1		XA----
-76	3066057-2	72737	. BOARD, Printed circuit	1		XA----
			<b>2-19</b>			



396-04(1)

Figure 6. Circuit Card Assembly, Horizontal Deflection A3  
(Sheet 1 of 2)



396-04(2)

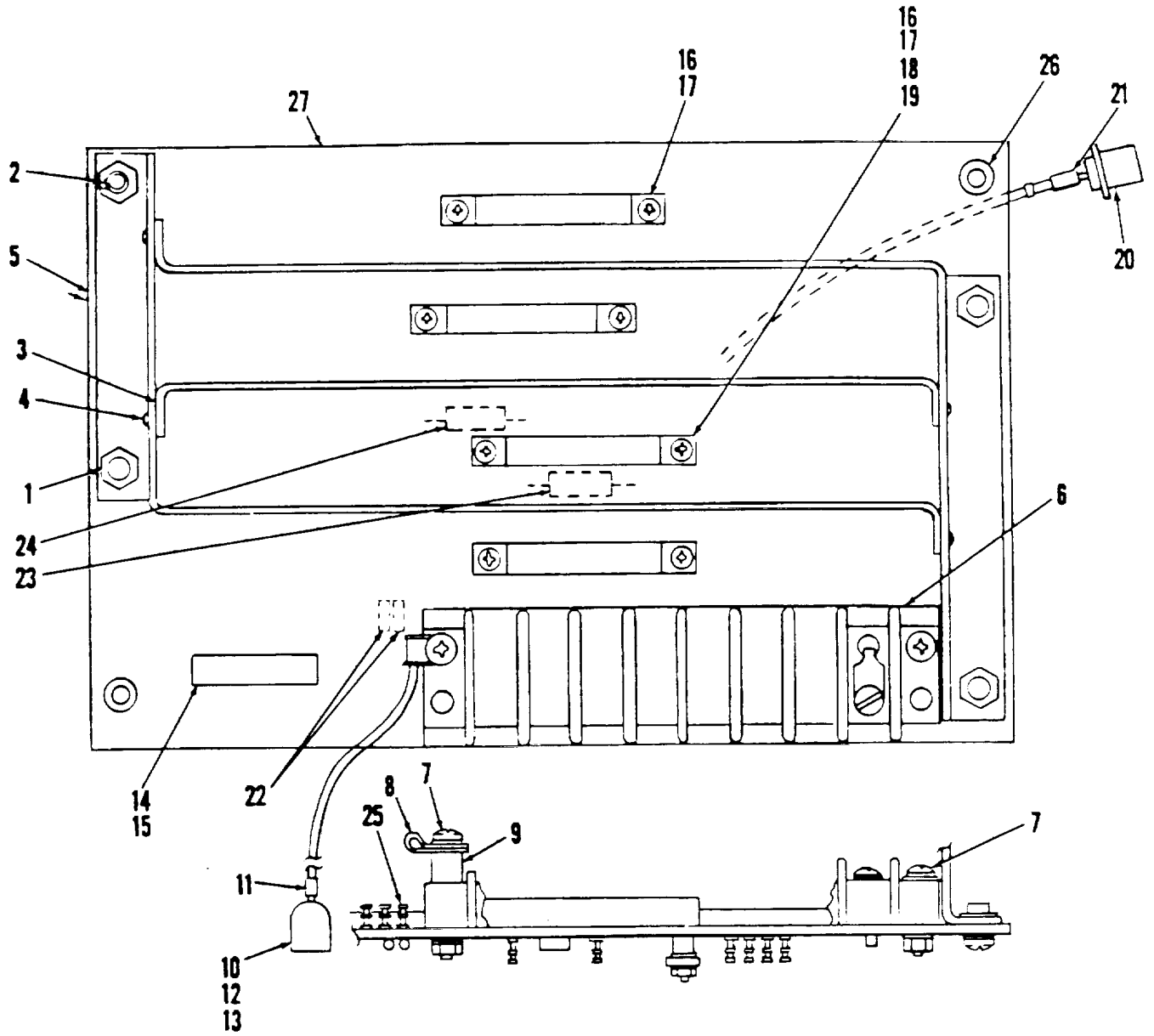
Figure 6. Circuit Card Assembly, Horizontal Deflection A3  
(Sheet 2 of 2)

FIGURE & INDEX NUMBER	PART NUMBER	FSCM	DESCRIPTION	UNITS PER ASSY	USABLE ON CODE	SMR CODE
6-	3066060-1	72737	CIRCUIT CARD ASSY, Horizontal de- flection A3 (See Fig. 2 for NHA)	REF		PAODDT
-1	JANTX1N751A	81349	. DIODE (CR1,92)	2		PADZZN
-2	JAN1N5618	81349	. DIODE (CR3,94, 96)	3		PADZZN
-3	JAN1N5419	81349	. DIODE (CR4,95)	2		PADZZN
-4	JAN1N5615	81349	. DIODE (CR88)	1		PADZZN
-5	JAN1N4454-1	81349	. DIODE (CR90,97- 99)	4		PADZZN
-6	M39014/02-1262	81349	. CAPACITOR (C1)	1		PADZZN
-7	M39003/01-2593	81349	. CAPACITOR (C2)	1		PADZZN
-8	M39003/01-2546	81349	. CAPACITOR (C3)	1		PADZZN
-9	CMR06F102JPDM	81349	. CAPACITOR (C4)	1		PADZZN
-10	M39003/01-2496	81349	. CAPACITOR (C5)	1		PADZZN
-11	CMR05F331JPDM	81349	. CAPACITOR (C6)	1		PADZZN
-12	CMR06F561JPDM	81349	. CAPACITOR (C7,26)	2		PADZZN
-13	CMR05C120jPDM	81349	. CAPACITOR (C9)	1		PADZZN
-14	CMR05F101JPDM	81349	. CAPACITOR (C10)	1		PADZZN
-15	CQR29A1MC123K3P	81249	. CAPACITOR (C14)	1		PADZZN
-16	M39003/01-2608	81349	. CAPACITOR (C15)	1		PADZZN
-17	CQR29A1MC683K3P	81349	. CAPACITOR (C16)	1		PADZZN
-18	CQR07A1QE103K3P	81349	. CAPACITOR (C17)	1		PADZZN
-19	CQR07A1QE333K3P	81349	. CAPACITOR (C18)	1		PADZZN
-20	M39003/01-2552	81349	. CAPACITOR (C19,20)	2		PADZZN
-21	CQR07A1QC123K3P	81349	. CAPACITOR (C21)	1		PADZZN
-22	CQR29A1MC104K3P	81349	. CAPACITOR (C22)	1		PADZZN
-23	3063922M405K10JL	72737	. CAPACITOR (C24,25)	2		PADZZN
-24	M39014/02-1270	81349	. CAPACITOR (C27,29)	2		PADZZN
-25	CMR05F91OJPDM	81349	. CAPACITOR (C28)	1		PADZZN
-26	M39006/01-3056	81349	. CAPACITOR (C30)	1		PADZZN
-27	M39003/01-2526	81349	. CAPACITOR (C32)	1		PADZZN
-28	M39006/01-3055	81349	. CAPACITOR (C33)	1		PADZZN
-29	39014/01-1280M	81349	. CAPACITOR (C34)	1		PADZZN
-30	3066448	72737	. INDUCTOR, Vari- able, horizontal drive boost (L2) (See Note 1)	1		PADZZN
-31	3065720-1	72737	. INDUCTOR, Vari- able, horizontal linearity (L3)	1		PADZZN
-32	MS3367-9	96906	. STRAP (AP)	1		PADZZN
-33	3067264	72737	. PLATE	1		PADZZN
-34	1800509	72737	. INDUCTOR, Fixed, width (L4)	1		PADZZN
-35	M55302/57A20X	81349	. CONNECTOR (P4)	1		PADZZN
1	Attaching hardware supplied with inductor.					

FIGURE & INDEX NUMBER	PART NUMBER	FSCM	DESCRIPTION	UNITS PER ASSY	USABLE ON CODE	SMR CODE
6-36	NAS671C4	80205	. NUT (AP)	2		PADZZN
	NAS62OC4L	80205	. FLATWASHER (AP)	2		PADZZN
	MS35338-135	96906	. LOCKWASHER (AP)	2		PADZZN
	MS51957-15	96906	. SCREW (AP)	2		PADZZN
-37	JANTX2N222A	81349	. TRANSISTOR (Q1-4, 6,101,102)	7		PADZZN
-38	A18	15199	. INSULATOR	7		PADZZN
-39	3063924	72737	. TRANSISTOR (Q7)	1		PADZZN
-40	3064189-1	72737	. TRANSISTOR (Q8)	1		PADZZN
-41	JAN2N6308	81349	. TRANSISTOR (Q9)	1		PADZZN
-42	MS35649-244	81349	. NUT (AP)	4		PADZZN
	MS35333-70	96906	. LOCKWASHER (AP)	2		PADZZN
	MS15795-803	96906	. FLATWASHER (AP)	4		PADZZN
	MS51957-120	96906	. SCREW (AP)	4		PADZZN
-43	MS77068-1	96906	. LUG, Terminal	2		PADZZN
-44	7403-10-03	55285	. INSULATOR, T03	2		PADZZN
-45	JANTX2N3440	81349	. TRANSISTOR (Q103)	1		PADZZN
-46	JANTX2N2219	81349	. TRANSISTOR (Q201)	1		PADZZN
-47	UM5	15199	. INSULATOR	3		PADZZN
-48	RWR89S22R6FM	81349	. RESISTOR (R1)	1		PADZZN
-49	RCR07G472JS	81349	. RESISTOR (R2,8,12)	3		PADZZN
-50	RCR20G102JS	81349	. RESISTOR (R3)	1		PADZZN
-51	RCR07G474JS	81349	. RESISTOR (R4,113)	2		PADZZN
-52	RJR24FX503M	81349	. RESISTOR, Vari- able (R5)	1		PADZZN
-53	RNC60H9092FS	81349	. RESISTOR (R6)	1		PADZZN
-54	RCR07G272JS	81349	. RESISTOR (R7)	1		PADZZN
-55	RNC60H11O3FS	81349	. RESISTOR (R9,32)	2		PADZZN
-56	RCR07G111JS	81349	. RESISTOR (R10)	1		PADZZN
-57	RCR07G104JS	81349	. RESISTOR (R16,107)	2		PADZZN
-58	RCR07G102JS	81349	. RESISTOR (R19,303)	2		PADZZN
-59	RNC60H1001FS	81349	. RESISTOR (R20,102)	2		PADZZN
-60	RNC60H187OFS	81349	. RESISTOR (R21)	1		PADZZN
-61	RCR07G82OJS	81349	. RESISTOR (R22)	1		PADZZN
-62	RCR32G122JS	81349	. RESISTOR (R24)	1		PADZZN
-63	RCR42G181JS	81349	. RESISTOR (R25)	1		PADZZN
-64	RCR20G470JS	81349	. RESISTOR (R26)	1		PADZZN
-65	RCR07G222JS	81349	. RESISTOR (R27,104)	2		PADZZN
-66	RWR89S1R00FM	81349	. RESISTOR (R29,101)	2		PADZZN
-67	RCR20G562JS	81349	. RESISTOR (R31)	1		PADZZN
-68	RCR32G153JS	81349	. RESISTOR (R33)	1		PADZZN
-69	RCR07G333JS	81349	. RESISTOR (R103)	1		PADZZN
-70	RCR07G103JS	81349	. RESISTOR (R105, 106,108)	3		PADZZN
-71	RCR07G332JS	81349	. RESISTOR (R109)	1		PADZZN
-72	RCR07G683JS	81349	. RESISTOR (R110)	1		PADZZN
-73	RCR07G682JS	81349	. RESISTOR (R112)	1		PADZZN
-74	RCR07G152JS	81349	. RESISTOR (R201)	1		PADZZN
-75	RCR20G561JS	81349	. RESISTOR (R202)	1		PADZZN
			<b>2-23</b>			

FIGURE & INDEX NUMBER	PART NUMBER	FSCM	DESCRIPTION	UNITS PER ASSY	USABLE ON CODE	SMR CODE
6-76	RJR24FX502M	81349	RESISTOR, Vari- able (R203)	1		PADZZN
-77	RCR20G222JS	81349	. RESISTOR (R204)	1		PADZZN
-78	RCR07G391JS	81349	. RESISTOR (R205)	1		PADZZN
-79	M39024/11-01	81349	TEST POINT (TP1-4)	4		PADZZN
-80	3063960	72737	. TRANSFORMER (T2)	1		PADZZN
-81	MS35649-244	96906	. NUT (AP)	2		PADZZN
	MS35333-70	96906	. LOCKWASHER (AP)	2		PADZZN
	MS15795-803	96906	. FLATWASHER (AP)	4		XBDZZN
	Ms51957-15	96906	. SCREW (AP)	2		PADZZN
-82	3066063	72737	. HEAT SINK	1		PADZZN
-83	MS35649-244	96906	. NUT (AP)	1		PADZZN
	MS35333-70	96906	. LOCKWASHER (AP)	1		PADZZN
	MS15795-803	96906	. FLATWASHER (AP)	2		PADZZN
	MS51957-15	96906	. SCREW (AP)	1		PADZZN
-84	3066061-2 wiring	72737	. BOARD, Printed	1		XA

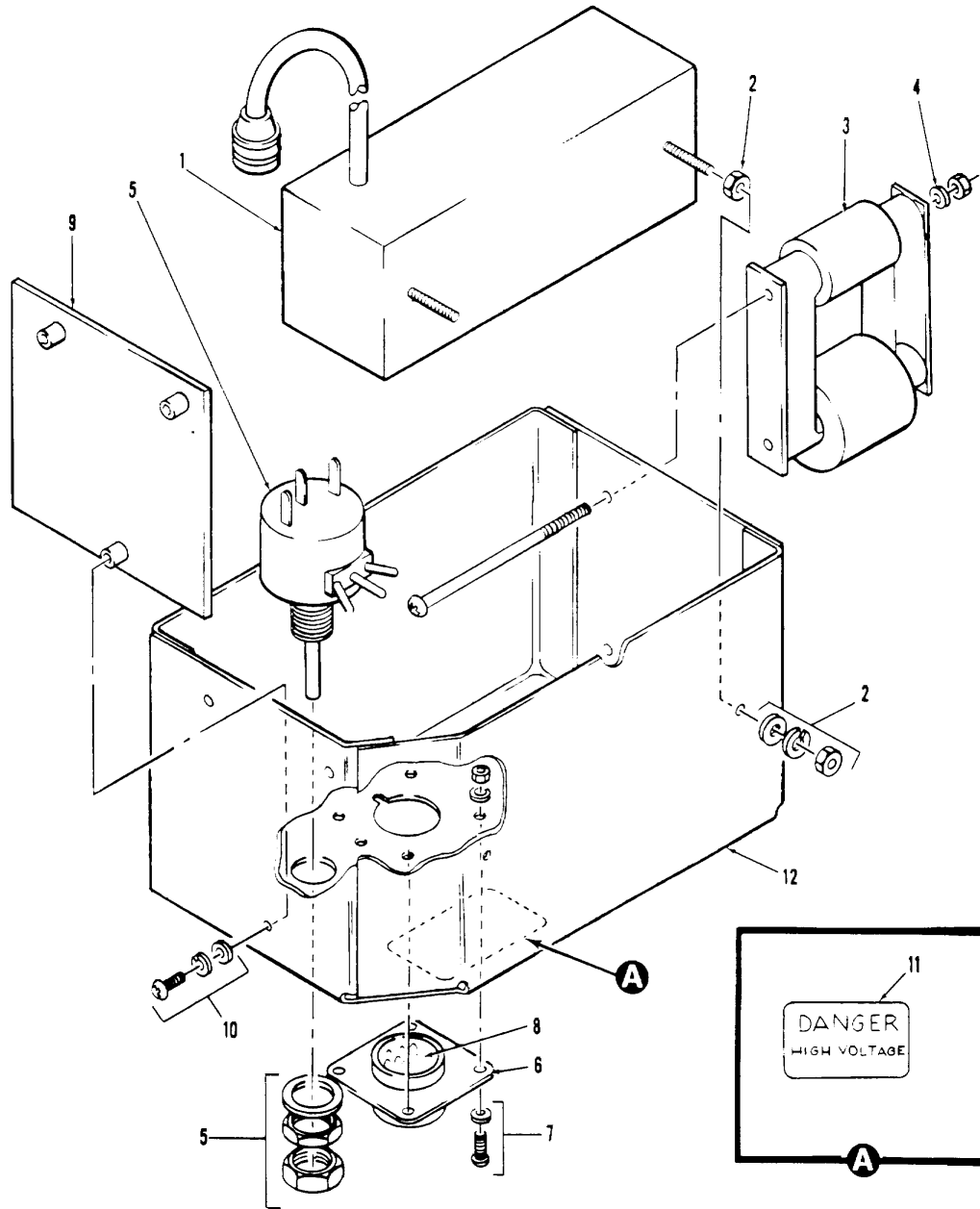




61414-5

Figure 7. Interconnect Assembly A7

FIGURE & INDEX NUMBER	PART NUMBER	FSCM	DESCRIPTION	UNITS PER ASSY	USABLE ON CODE	SMR CODE
7-	3066074-1	72737	INTERCONNECT ASSY A7 (See Fig. 2 for NHA)	REF		ADDDD-
-1	3066048	72737	. RACK ASSY, Card	1		XBDZZN
	MS51957-30	96906	. SCREW (AP)	4		PADZZN
	M515795-805	96906	. FLATWASHER (AP)	4		PAFZZN
-2	LKS632-2	46384	. . NUT, Clinch	4		PADZZN
-3	125-09-3.25	52094	. . GUIDE	4		XBDZZN
-4	MS20470A3-3	96906	. . RIVET (AP)	16		PADZZN
	M520470A3-4	96906	. . RIVET (AP)	20		PAFZZN
-5	3066048-101	72737	. . RACK, Card	1		XBDZZN
-6	354-18-08-001	71785	. BOARD, Terminal (TB1)	1		PADZZN
-7	NA5671C6	80205	. NUT (AP)	2		PAFZZN
	M535338-136	96906	. LOCKWASHER (AP)	2		PAFZZN
	M515795-805	96906	. FLAWASHER (AP)	4		PAFZZN
	MS51957-32	96906	. SCREW (AP)	1		PAFZZN
	MS51957-34	96906	. SCREW (AP)	1		PADZZN
-8	:3/16-2	95987	. CLAMP, Cable	1		XBDZZN
-9	9224A140	06540	. SPACER	1		PADZZN
-10	205838-1	00779	. CONNECTOR (P8)	1		PADZZN
-11	mS3368-5-9E	96906	. STRAP, Marker	1		PADZZN
-12	66569-3	00779	. SOCKET	5		PADZZN
-13	206062-1	00779	. CLAMP, Cable	1		PADZZN
-14	WTA14SED9JL	10400	. CONNECTOR (J1) (See Note 1)	1		PADZZN
-15	2201PH089	06540	. WASHER, Insulating (AP)	2		PADZZN
-16	M55302/58B20X	81349	. CONNECTOR (J2-5)	4		PADZZN
-17	NAS671C4	80205	. NUT (AP)	8		PADZZN
	MS35338-135	96906	. LOCKWASHER (AP)	8		PADZZN
	D128	95987	. D WASHER	1		PADZZN
	MS15795-803	96906	. FLATWASHER (AP)	16		PADZZN
	M51957-17	96906	. SCREW (AP)	7		PADZZN
	MS51957-20	96906	. SCREW (AP)	1		PADZZN
-18	3/16-2	95987	. CLAMP, Cable	1		XBDZZN
-19	9207A115	06540	. SPACER	1		PADZZN
-20	30467-1	95712	. CONNECTOR (1J1)	1		PADZZN
-21	MS3368-5-9E	96906	. STRAP, Marker	1		PADZZN
-22	JAN1N6113	81349	. DIODE (CR1,2)	2		PADZZN
-23	RNC6OH75ROFS	96906	. RESISTOR (R1)	1		PADZZN
-24	RCR07G1OOJS	96906	. RESISTOR (R4)	1		PADZZN
-25	SE12XCO5	81349	. TERMINAL	11		PADZZN
-26	K FS2-632	46384	. NUT, Pressure	4		PADZZN
-27	3066075-2	72737	. BOARD, Printed wiring	1		XBDZZN
1 All attaching hardware, except item 15, are supplied with connector.						

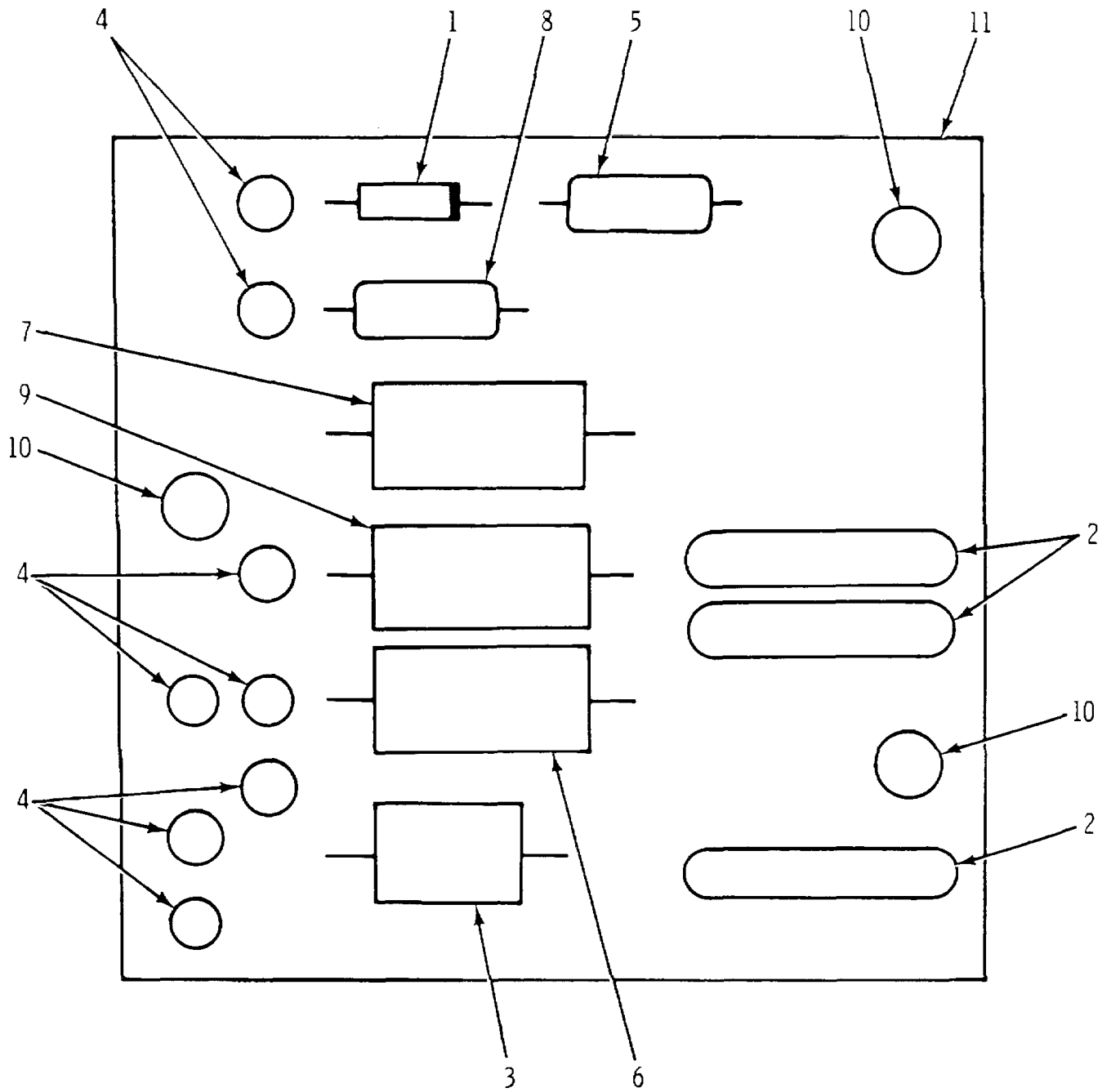


61414-6

Figure 8. High Voltage Power Supply Assembly A5

FIGURE & INDEX NUMBER	PART NUMBER	FSCM	DESCRIPTION	UNITS PER ASSY	USABLE ON CODE	SMR CODE
8-	3066054-1	72737	HIGH VOLTAGE POWER SUPPLY ASSY A5 (See Fig. 2 for NHA)	REF		PAODDT
-1	SCMA10513A	14099	. TV PAK	1		PADZZN
-2	MS35649-284	96906	. NUT (AP)	2		PADZZN
	MS35338-137	96906	. LOCKWASHER (AP)	2		PADZZN
	MS15795-807	96906	. FLATWASHER (AP)	2		PADZZN
	MS51858-4	96906	. NUT (AP)	2		PADZZN
-3	1300510	72737	. TRANSFORMER (T1) (See Note 1)	1		PADZZN
-4	MS15795-803	96906	. FLATWASHER (AP)	2		PADZZN
-5	RV4LAYS205A	81349	. RESISTOR, Vari- able (R6) (See Note 2)	1		PADZZN
-6	205841-1	00779	. CONNECTOR (J8)	1		PADZZN
-7	MS35649-244	96906	. NUT (AP)	4		PADZZN
	MS35338-135	96906	. LOCKWASHER (AP)	4		PADZZN
	MS15795-803	96906	. FLATWASHER (AP)	4		PADZZN
	MS51957-15	96906	. SCREW (AP)	4		PADZZN
-8	66570-3	00779	. PIN, Contact	5		PADZZN
-9	3066077	72737	. CIRCUIT CARD ASSY, HVPS (See Fig. 9 for detail parts) J	1		PADLLT
-10	MS51957-14	96906	. SCREW (AP)	3		PADZZN
	MS35338-135	96906	. LOCKWASHER (AP)	3		PADZZN
	MS15795-803	96906	. FLATWASHER (AP)	3		PADZZN
-11	3061058	72737	. LABEL, Warning	1		MD----
-12	3066055-1	72737	. HOUSING	1		XBDZZN

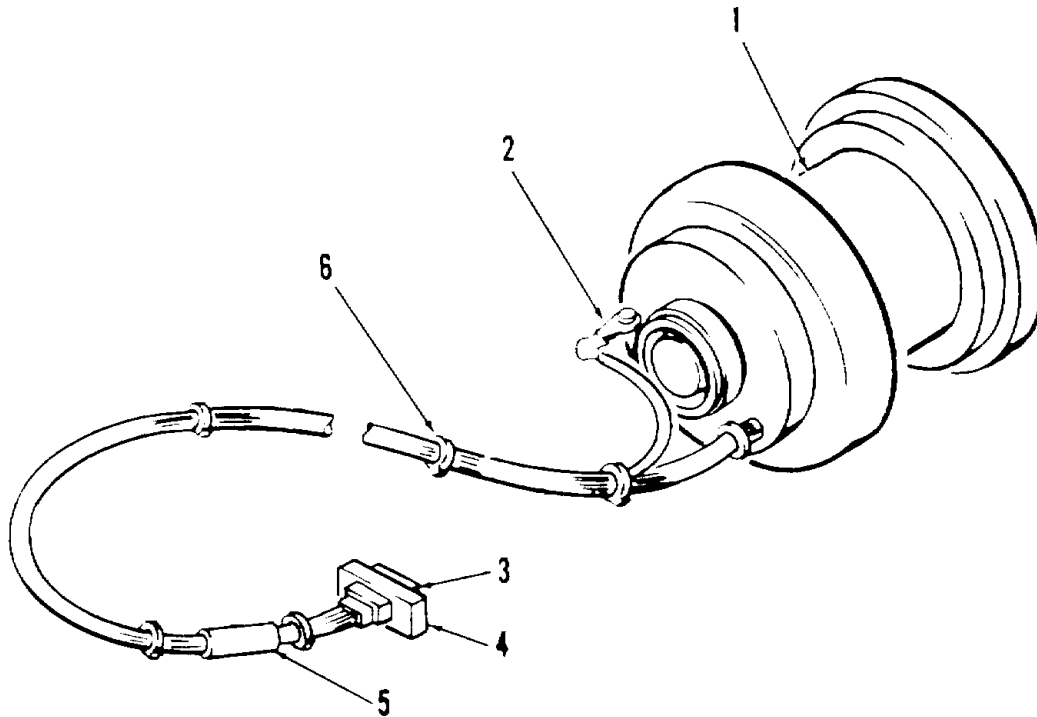
- 1 All attaching hardware, except item 4, are supplied with transformer.
- 2 All attaching hardware are supplied with resistor.



396-05

Figure 9. Circuit Card Assembly, HVPS A5

FIGURE & INDEX NUMBER	PART NUMBER	FSCM	DESCRIPTION	UNITS PER ASSY	USABLE ON CODE	SMR CODE
9-	3066077	72737	CIRCUIT CARD ASSY, HVPS A5 (See Fig. 8 for NHA)	REF		PADLLT
-1	JANIN5621	81349	. DIODE (CR1)	1		PADZZN
-2	3063926	72737	. CAPACITOR, Fixed, 0.01 F, 1.6 kV (C1-3)	3		PADZZN
-3	3065254-2001-9	72737	. GAP, Spark (E101)	1		PADZZN
-4	128OB1	88245	. TERMINAL	8		PADZZN
-5	RCR20G471JS	81349	. RESISTOR (R1)	1		PADZZN
-6	RCR32G111JS	81349	. RESISTOR (R2)	1		PADZZN
-7	RCR32G824JS	81349	. RESISTOR (R3)	1		PADZZN
-8	RCR20G564JS	81349	. RESISTOR (R4)	1		PADZZN
-9	RCR32G1O5JS	81349	. RESISTOR (R5)	1		PADZZN
-10	9532BSS0440	06540	. STANDOFF	3		PADZZN
-11	3066130-1	72737	. BOARD, Printed wiring	1		XA----



61414-4

Figure 10. Yoke Assembly

FIGURE & INDEX NUMBER	PART NUMBER	FSCM	DESCRIPTION	UNITS							USABLE ON CODE	SMR CODE
				PER	ASSY	1	2	3	4	5		
10-	3066577	72737	YOKE ASSY (L1) (See Fig. 2 for NHA)	REF								ADDDD-
-1	1800481	72737	. COIL, Tube de- flection	1								PADZZN
-2	Ms77070-3	96906	. LUG, Terminal	1								PADZZN
-3	M24308/4-1	81349	. CONNECTOR (P9)	1								PADZZN
-4	DE51224-1	71468	. RETAINER, Sliding lock	1								XBDZZN
-5	MS3368-5	96906	. STRAP, Tiedown	1								PADZZN
-6	MS3367-4	96906	. STRAP, Harness	6								PADZZN

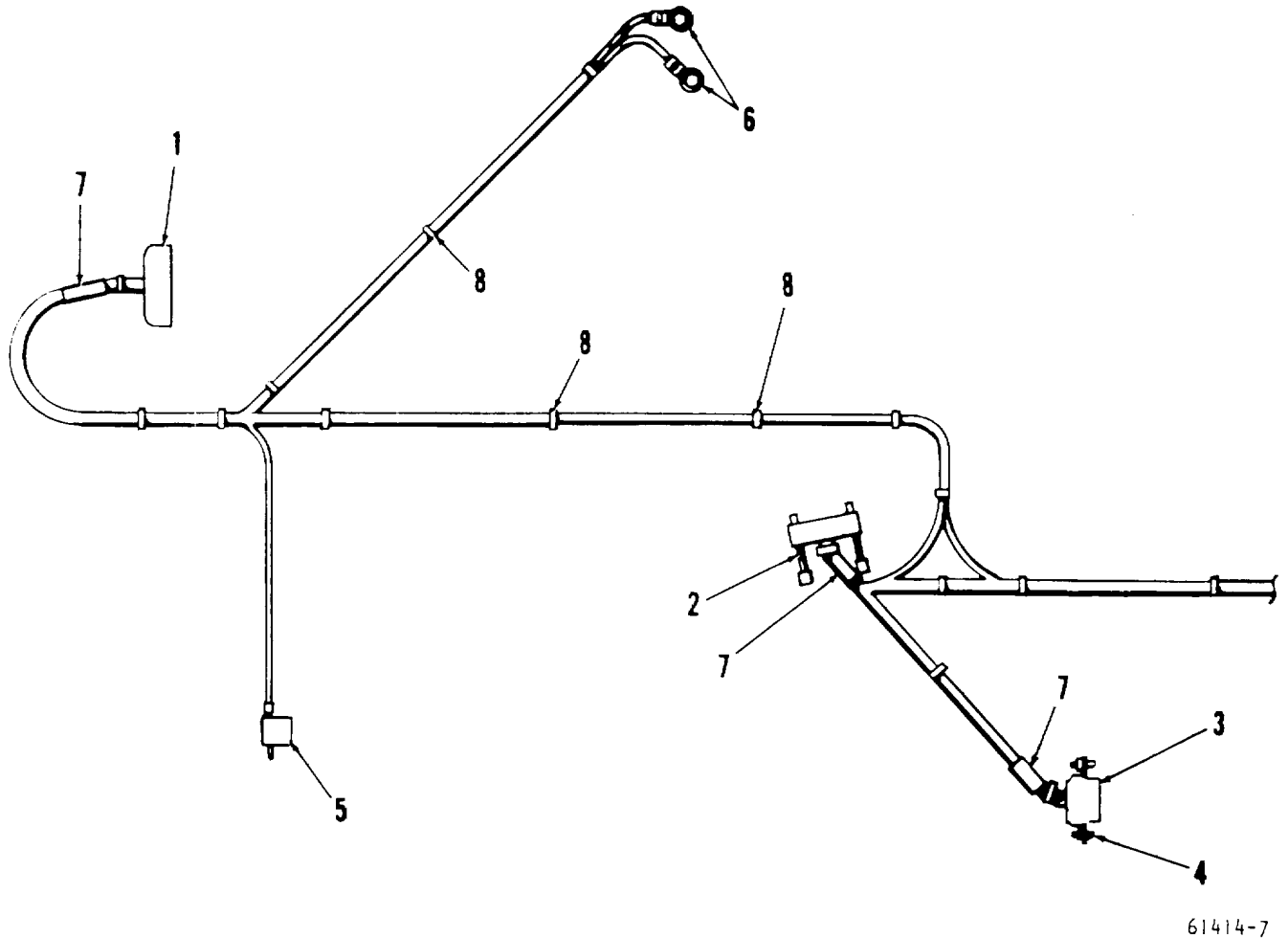
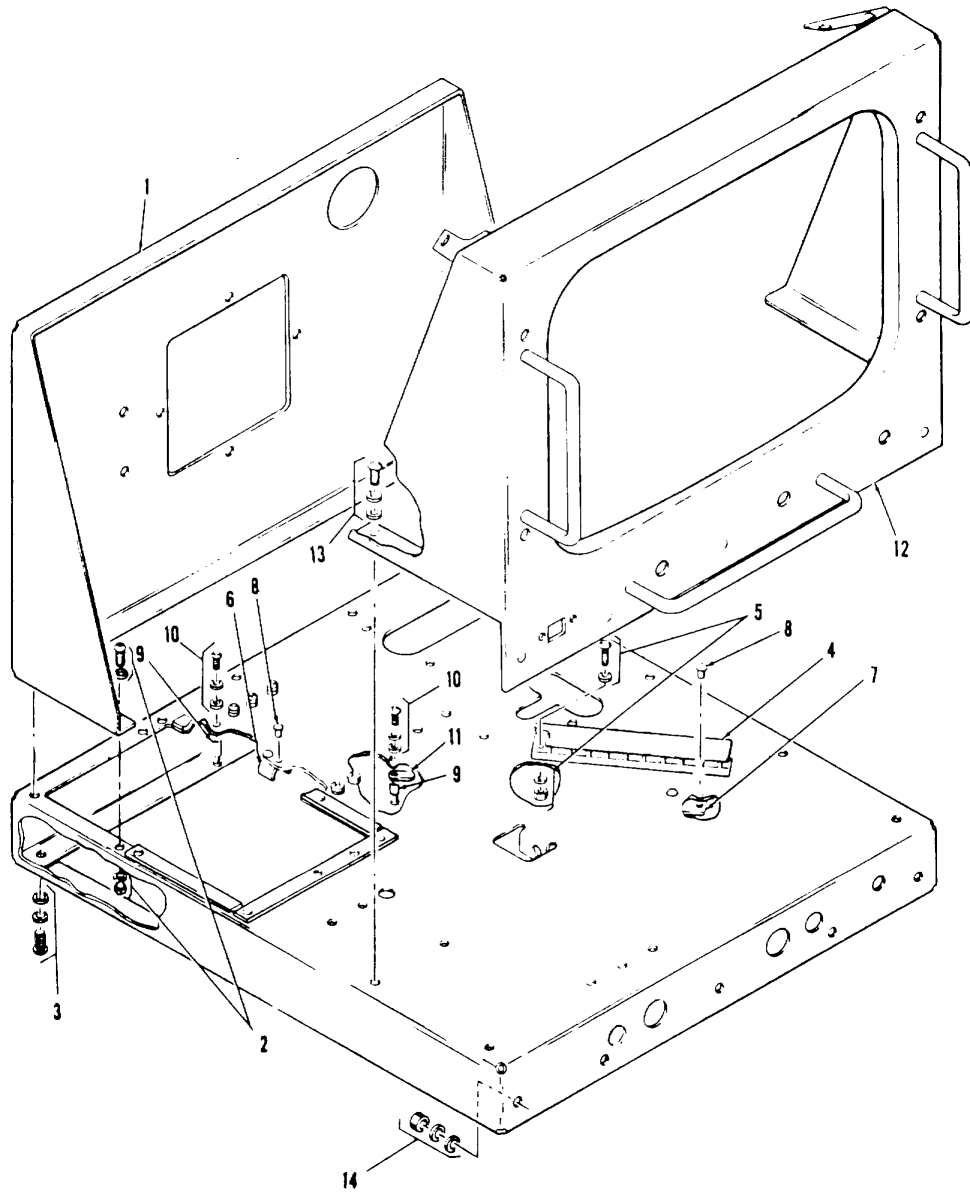


Figure 11. Harness Assembly

FIGURE & INDEX NUMBER	PART NUMBER	FSCM	DESCRIPTION							UNITS PER ASSY	USABLE ON CODE	SMR CODE
			1	2	3	4	5	6	7			
11-	3066633	72737	HARNESS ASSY (See Fig. 2 for NHA)							REF		AFFDD-
-1	1800493	72737	. SOCKET							1		PADZZN
-2	WTA14PCJT	10400	. CONNECTOR (P1)							1		PADZZN
-3	M24308/2-1	81349	. CONNECTOR (J9)							1		PADZZN
-4	D53018-5	71468	. LOCKPOST, Sliding							2		PADZZN
-5	JF1S1P-A	81312	. CONNECTOR (P11)							1		PADZZN
-6	32345	29587	. TERMINAL, Ring tongue							2		PADZZN
-7	MS3368-5	96906	. STRAP, Tiedown							3		PADZZN
-8	Ms3367-4	96906	. STRAP, Harness							20		PADZZN





61414-3

Figure 12. Chassis Subassembly

FIGURE & INDEX NUMBER	PART NUMBER	FSCM	DESCRIPTION	UNITS PER ASSY	USABLE ON CODE	SMR CODE
12-	3066562	72737	CHASSIS SUBASSY (See Fig. 2 for NHA)	REF		XBFZZN
-1	3066564	72737	. PANEL, Rear support	1		XBFZZN
-2	MS24693C24	96906	. SCREW (AP)	3		PAFZZN
	MS15795-805	96906	. FLATWASHER (AP)	3		PADZZN
	MS35338-136	96906	. LOCKWCASHER (AP)	3		PADZZN
	NAS671C6	96906	. NU'T (AP)	3		PADZZN
-3	MS51957-28	96906	. SCREW (AP)	9		PAFZZN
	MS35338-136	96906	. LOCRWASHER (AP)			PAFZZN
	MS15795-805	96906	. FLATWASHER (AP)	9		PAFZZN
-4	354-18-09-001	71785	. BOARD, Terminal (TB2)	1		PAFZZN
-5	NAS671C6	80205	. NUT (AP)	2		PAFZZN
	MS35338-136	96906	. LOCKWASHER (AP)	2		PAFZZN
	MS15795-805	96906	. FLATWASHER (AP)	2		PAFZZN
	MS51957-32	96906	. SCREW (AP)	2		PAFZZN
-6	M24066/2-121	81349	. CLIP, Component	4		PAFZZN
-7	M24066/2-126	81349	. CLIP, Component	1		PAFZZN
-8	MS20470A3-4	96906	. RIVET (AP)	10		PAFZZN
-9	SE19-5DW-1	81349	. TERMINAL	11		PAFZZN
-10	MS51957-13	96906	. SCREW (AP)	11		PAFZZN
	MS35338-135	96906	. LOCKWASHER (AP)	11		PAFZZN.
	MS15795-803	96906	. FLATWASHER (AP)	11		PAFZZN
-11	MS77068-1	96906	. LUG, Terminal	1		PAFZZN
-12	3066568	82737	. FRAME, Front	1		XBFZZN
-13	MS51958-63	96906	. SCREW (AP)	4		PAFZZN
	M535338-138	96906	. LOCKWASHER (AP)	4		PAFZZN
	MS15795-808	96906	. FLATWASHER (AP)	4		PAFZZN
-14	NAS671C6	80205	. NIUT (AP)	5		PAFZZN
	MS35338-136	96906	. LOCKWASHER (AP)	5		PAFZZN
	MS15795-805	96906	. FLATWASHER (AP)	5		PAFZZN
-15	3066563	82737	. CHASSIS	1		XBFZZN
			<b>2-34</b>			

SECTION III  
 NUMERICAL INDEX

PART NUMBER	NSN	FIGURE & INDEX NUMBER	QTY PER END ITEM	USMC SMR CODE	USMC SSI CODE	USMC REPL FACTOR
A18	5999-00-173-1118	4-25	25			
		5-22				
		6-38				
CLS632-2	5310-00-725-4719	2-31	2			
CMR03C3RODOCM	5910-01-038-7909	4-16	2			
CMR05C12OJPDM	5910	6-13	1			
CMRO5E33OJPDM	5910-01-062-3094	4-13	1			
CMR05F111JPDM	5910-01-043-6894	4-10	2			
		6-14				
CMR05F151JPDM	5910-01-047-7871	4-12	1			
CMR05F181JPDM	5910	5-18	1			
CMR05F221JPDM	5910-01-044-8561	3-9	2			
CMR05F301JPDM	5910	4-14	2			
CMRO5F331JPDM	5910-01-052-8907	6-11	1			
CMRO5F91OJPDM	5910	6-25	1			
CMR06F1O2JPDM	5910-01-044-8566	4-9	5			
		5-7				
		6-9				
CMR06F202JPDM	5910-01-042-0077	5-8	1			
CMR06F431JPDM	5910-01-031-5925	4-17	1			
CMR06F561JPDM	5910-01-041-6300	3-7	4			
		5-15				
		6-12				
CQRO7A1QC123K3P	5910	6-21	1			
CQR07A1QE1O3K3P	5910	6-18	1			
CQR07A1QE333K3P	5910	6-19	1			
CQR29A1MA224K3P	5910	5-12	1			
CQR29A1MA684K3P	5910	5-11	1			
CQR29A1MC104K3P	5910	6-22	1			
CQR29A1MC123K3P	5910	6-15	1			
CQR29AIMC683K3P	5910	6-17	1			
CQR29A1ME154K3M	5910	2-55	1			
DE51224-1	5940	10-4	1			
D128	5310-00-305-15072	7-17	1			
D140	5310	2-11	4			
		2-13				
		2-17				
		2-19				
D53018-5	5940	11-4	2			

PART NUMBER	NSN	FIGURE & INDEX NUMBER	QTY PER END ITEM	USMC SMR CODE	USMC SSI CODE	USMC REPL FACTOR
JANTX1N751A	5961-00-104-1398	4-1	6			
		6-1				
JANTX1N756A	5961-00-105-5734	4-3	2			
JANTX2N2219	5961-00-022-4386	6-46	1			
JANTX2N2222A	5961-00-858-3826	3-18	24			
		4-2	3			
		5-21				
		6-37				
JANTX2N3440	5961-00-272-8374	6-45	1			
JANTX2N3441	5961-00-501-1174	3-22	1			
JANTX2N3442	5961-01-065-8073	3-14	2			
JANTX2N3501	5961-00-113-7650Z	4-27	1			
JAN1N4454-1	5961-01-067-3033	3-2	17			
		4-2				
		5-1				
		6-5				
JAN1N5419	5961-00-481-8080	6-3	2			
JAN1N5615	5961-00-404-9136	6-4	1			
JAN1N5618	5961-00-427-0430	6-2	3			
JAN1N5621	5961-01-023-9459	9-1	1			
JAN1N6113	5961	7-22	2			
JAN1N6117	5961	3-3	2			
JAN1N6122	5961	3-1	1			
JAN2N3251A	5961-00-911-6015	4-24	2			
JAN2N3637	5961-00-988-4570	4-26	1			
JAN2N3741	5961-00-232-8302	3-21	1			
JAN2N491A	5961-00-101-0075	5-23	1			
JAN2N6308	5961-01-052-5596	6-41	1			
JFA1S1P-A	5905-00-921-7903	4-18	2			
		11-5				
KFS2-632	5310-00-937-0294	7-26	4			
LAC440-2	5310-00-071-0199	4-60	3			
		5-74				
LATO3B5CB	5999	3-20	2			
LKS632-2	5310	7-2	4			
MS15795-803	5310-00-880-5978	2-25	75			
MS15795-804	5310	1-8	2			
MS15795-805	5310-00-722-5998	2-6	53			
MS15795-806	5310	2-76	2			
MS15795-807	5310-00-880-5978	8-2	2			
		<b>3-2</b>				

PART NUMBER	NSN	FIGURE & INDEX NUMBER	QTY PER END ITEM	USMC SMR CODE	USMC SSI CODE	USMC REPL FACTOR
MS15795-808	5310	12-13	4			
MS15795-811	5310	2-38	8			
MS15795-813	5310	2-38	5			
		2-41				
MS17322-10	6645-00-1371	2-67	1			
MS20470A3-3	5320-00-721-8973	2-28	43			
MS20470A3-4	5320-00-637-5422	7-4	20			
MS20600AD4W2	5320	1-6A	2			
MS21044C3	5310-00-208-9255	2-42	1			
MS21266-2N	5325-01-024-4930	2-9	1			
MS24693C24	5305-00-066-7326	12-2	3			
M524693C4	5305-00-056-9961	2-23	6			
MS24693C26	5305	1-2	40			
	5305	1-4				
MS3367-4	5975-00-727-5153	10-6	26			
MS3367-9	5975	6-32	1			
MS3368-5	5975	10-5	3			
MS3368-5-9E	5975-00-482-3954	7-11	2			
MS35333-69	5310-00-543-4642	4-19	1			
MS35333-70	5310-00-550-3715	5-27	7			
MS35338-134	5310	2-57	2			
MS35338-135	5310	2-27	54			
MS35338-136	5310-00-929-6395	2-6	39			
MS35338-137	5310-00-933-8119	8-2	2			
MS35338-138	5310-00-933-8120	2-42	5			
MS35489-35	5325-00-185-0012	2-66	1			
MS35649-204	5310-00-934-9760	2-43	1			
MS35649-224	5310	2-57	4			
MS35649-2254	5310	2-39	2			
MS35649-244	5310-00-934-9748	3-15	21			
MS35649-284	5310-00-934-9759	8-2	2			
MS51858-4	5310-00-421-9608	8-2	2			
MS51957-12	5305-01-049-9121	2-74	2			
MS51957-120	5305	6-42	4			
MS51957-13	5310	1-8	13			
MS51957-14	5305-00-054-5648	8-10	3			
MS51957-15	5305-00-054-5649	2-27	29			
MS51957-16	5305-00-054-5650	4-22	2			
MS51957-17	5305-00-054-5651	2-25	18			
MS51957-18	5305-00-054-5652	3-15	4			
MS51957-20	5305	7-17	1			

PART NUMBER	NSN	FIGURE & INDEX NUMBER	QTY PER END ITEM	USMC SMR CODE	USMC SSI CODE	USMC REPL FACTOR
MS51957-27	5305-00-054-6651	2-6	7			
MS51957-28	5305	2-8	18			
MS51957-29	5305	2-11	1			
MS51957-30	5305-00-054-6654	2-22	6			
MS51957-32	5305-00-054-6656	7-7	3			
MS51957-34	5305-00-054-6658	7-7	1			
MS51957-35	5305-00-054-6659	2-34	2			
MS51957-5	5305	2-57	2			
MS51957-78	5305	2-30	2			
MS51958-63	5305	12-13	4			
MS51958-64	5305	2-38	5			
MS51958-65	5305-00-059-3361	2-42	1			
MS51958-69	5305-00-059-3665	2-45A	4			
MS51959-6	5305-00-763-3357	4-19	1			
MS77068-1	5940-00-682-2477	3-16	8			
MS77068-2	5940	2-14	1			
MS77070-1	5940-00-177-7974	5-28	2			
MS77070-2	5940	2-64	1			
MS77070-3	5940-00-204-5088	10-2	1			
MS77070-5	5940-00-156-7373	2-20	4			
M24066/2-121	5340-00-725-6033	12-6	4			
M24066/2-126	5340-00-069-2804	12-7	1			
M24308/2-1	5935	11-3	1			
M24308/4-1	5935-00-466-3394	10-3	1			
M38510/10101BGA	5962-00-599-5695	5-71	2			
M38510/10201BIA	5962-00-584-0623	3-38	2			
M38527/1-25N2	5970	3-19	1			
M38527/1-28N2	5970	3-39	2			
M39003/01-2496	5910-00-007-3973	6-10	1			
M39003/01-2511	5910	5-3	3			
M39003/01-2526	5910-00-113-5475	4-8	2			
		6-27				
M39003/01-2529	5910-00-007-2003	4-4	2			
M39003/01-2535	5910-00-113-5698	5-2	1			
M39003/01-2541	5910-00-236-8745	5-16	2			
M39003/01-2543	5910-00-761-7112	4-6	4			
M39003/01-2546	5910-00-144-4383	3-10	2			
		6-8				
M39003/01-2552	5910-00-154-0547	6-20	2			
M39003/01-2593	5910-00-254-8169	6-7	1			
		<b>3-4</b>				

PART NUMBER	NSN	FIGURE & INDEX NUMBER	QTY PER END ITEM	USMC SMR CODE	USMC SSI CODE	USMC REPL FACTOR
M39003/01-2604	5910-00-270-3080	5-6	2			
M39003/01-2608	5910	6-16	1			
M39003/01-2620	5910-00-236-8767	3-4	4			
		5-13				
M39003/01-2705	5910-00-270-3081	4-15	1			
M39006/01-3055	5910-00-010-8104	6-28	1			
M39006/01-3056	5910-00-113-9720	6-26	1			
M39006/01-3075	5905-00-175-4631	2-53	2			
M39006/01-3079	5910-00-113-5474	2-52	2			
M39014/01-1280	5910-00-121-7379	3-11	4			
		6-29				
M39014/01-1489	5910-00-101-8715	4-7	2			
M39014/01-1501	5910	3-5	1			
M39014/01-1513	5910-00-010-8717	3-6	1			
M39014/02-1252	5910-00-143-0501	5-9	1			
M39014/02-1262	5910	6-6	1			
M39014/02-1270	5910	4-5	11			
		5-17				
		6-24				
M39014/02-1272	5910	5-5	1			
M39014/02-1276	5910-00-113-5286	5-4	1			
M39014/02-1280	5910	3-11	3			
		4-11				
		5-10				
M39014/02-1411	5910-00-010-8721	3-8	3			
		5-14				
M39014/02-1419	5910	2-54	2			
M39015/3-007XM	5905-01-054-3389	5-57	2			
M39015/3-008XM	5905	3-32	1			
M39019/6-20	5925-01-038-7912	2-75	1			
M39024/11-01	5935-00-131-9680	3-37	15			
		4-56				
		5-70				
		6-79				
M535649-244	5310	6-42	4			
M55302/57A20X	5935-01-044-4009	3-12	4			
		4-21				
		5-19				
		6-35				

PART NUMBER	NSN	FIGURE & INDEX NUMBER	QTY PER END ITEM	USMC SMR CODE	USMC SSI CODE	USMC REPL FACTOR
MS5302/58B20X	5935	7-16	4			
NAS620C2	5310-00-043-4708	2-57	6			
NAS620C4L	5310-00-723-9676	2-68	14			
NAS671C2	5310-00-812-4294	4-19	1			
NAS671C4	5310-00-208-3786	2-68	22			
NAS671C6	5310-00-616-8660	2-11	15			
RCR07G100JS	5905-00-107-0656	3-36	5			
		4-53				
		7-24				
RCR07G101JS	5905-00-141-1183	4-36	5			
		5-43				
		6-56				
RCR07G102JS	5905-00-110-7620	4-32	18			
		5-33				
		6-58				
RCR07G103JS	5905-00-106-3666	4-40	6			
		5-65				
		6-70				
RCR07G104JS	5905-00-110-0388	4-48	4			
		5-60				
		6-57				
RCR07G121JS	5905-00-119-8812	4-45	2			
RCR07G123JS	5905-00-106-1278	5-63	2			
RCR07G151JS	5905-00-119-8811	5-49	2			
RCR07G152JS	5905-00-106-1356	6-74	1			
RCR07G153JS	5905-00-116-8555	5-46	1			
RCR07G2R7JS	5905-00-455-4403	5-52	1			
RCR07G222JS	5905-00-105-7764	3-35	8			
		4-41				
		5-34				
		6-65				
RCR07G223JS	5905-00-116-8556	4-38	2			
		5-40				
RCR07G224JS	5905-00-105-7765	5-48	1			
RCR07G272JS	5905-00-111-4727	6-54	1			
RCR07G330JS	5905-00-135-6045	3-26	1			
RCR07G331JS	5905-00-114-0710	5-35	3			
RCR07G332JS	5905-00-126-6683	4-52	3			
		5-59				
		6-71				
		<b>3-6</b>				



PART NUMBER	NSN	FIGURE & INDEX NUMBER	QTY PER END ITEM	USMC SMR CODE	USMC SSI CODE	USMC REPL FACTOR
RCR07G333JS	5905-00-118-4559	5-32	3			
		6-69				
RCR07G391JS	5905-00-121-9932	5-47	2			
		6-78				
RCR07G393JS	5905-00-115-8055	5-53	2			
RCR07G470JS	5905-00-104-8368	3-34	4			
		4-34				
RCR07G471JS	5905-00-120-9154	4-44	4			
		5-62				
RCR07G472JS	5905-00-114-0711	6-49	3			
RCR07G473JS	5905-00-141-0717	5-42	2			
RCR07G474JS	5905-00-105-7767	6-51	2			
RCR07G561JS	5905-00-105-7768	5-61	1			
RCR07G562JS	5905-00-141-0744	3-28	6			
		4-35				
		5-44				
RCR07G682JS	5905-00-110-7622	5-36	2			
		6-73				
RCR07G683JS	5905-00-119-3505	5-31	3			
		6-72				
RCR07G820JS	5905-00-104-8363	6-61	1			
RCR07G821JS	5905-00-119-8768	4-51	1			
RCR07G822JS	5905-00-104-8358	5-39	1			
RCR07G823JS	5905-00-435-6374	5-68	1			
RCR20G102JS	5905-00-110-0196	2-59	3			
		6-50				
RCR20G104JS	5905-00-104-8336	2-58	1			
RCR20G2R7JS	5905-00-111-4852	5-66	1			
RCR20G222JS	5905	6-77	1			
RCR20G330JS	5905-00-935-8543	5-30	1			
RCR20G391JS	5905-00-111-4742	4-47	1			
RCR20G470JS	5905-00-111-4734	6-64	1			
RCR20G471JS	5905-00-111-4858	9-5	1			
RCR20G561JS	5905-00-141-0598	6-75	1			
RCR20G562JS	5905-00-141-1116	6-67	1			
RCR20G564JS	5905-00-141-1073	9-8	1			
RCR32G101JS	5905-00-104-8347	9-6	1			
RCR32G105JS	5905-00-247-8684	9-9	1			
RCR32G122JS	5905-00-369-6916	6-62	1			
RCR32G153JS	5905-00-104-8352	4-54	2			
		6-68				
		<b>3-7</b>				

PART NUMBER	NSN	FIGURE & INDEX NUMBER	QTY PER END ITEM	USMC SMR CODE	USMC SSI CODE	USMC REPL FACTOR
RRC32G56OJS	5905-00-228-6096	4-37	2			
RRC32G824JS	5905-00-111-6009	9-7	1			
RRC42G181JS	5905-00-504-6770	6-63	1			
RER65F604OR	5905	2-56	1			
RJR24FX201P	5905	4-33	1			
RJR24FX202M	5905-01-017-4891	4-55	1			
RJR24FX203M	5905-01-015-3529	5-54	1			
RJR24FX254M	5905-01-057-2653	5-50	1			
RJR24FX502M	5905-01-025-6943	6-76	1			
RJR24FX503M	5905-01-019-5063	6-52	1			
RJR24FX504M	5905	3-29	1			
RNC6OG121OFS	5905	4-42	1			
RNC6OG825OFS	5905	4-43	1			
RNC60H1001FS	5905-00-197-4289	4-31	8			
		5-41				
		6-59				
RNC60H1002FS	5905-00-138-1283	3-31	4			
		4-30				
		5-37				
RNC60H1003FS	5905-00-407-2160	5-45	2			
RNC60H1103FS	5905-00-721-3742	6-55	2			
RNC60H1471FS	5905-00-403-3122	5-69	1			
RNC60H1542FS	5905-00-197-4293	5-55	1			
RNC60H1543FS	5905-00-422-4433	5-51	1			
RNC60H1781FS	5905-00-462-5673	5-56	1			
RNC60H1823FS	5905-00-629-8188	3-30	1			
RNC60H187OFS	5905-00-5819	6-60	1			
RNC60H2263FS	5905-00-138-7408	5-38	1			
RNC60H3321FS	5905-00-232-3170	4-50	2			
		5-58				
RNC60H3322FS	5905-00-195-5586	4-49	1			
RNC60H402OFS	5905-00-472-0805	4-39	1			
RNC60H4021FS	5905-00-629-9738	3-33	1			
RNC60H75ROFS	5905-00-009-8031	7-23	1			
RNC60HB250FS	5905-00-484-0483	5-64	1			
RNC60H9092FS	5905-00-229-7541	6-53	1			
RNC7OR1212FS	5905-00-429-9838	4-46	1			
RV4LAYS205A	5905	8-5	1			
RWR89SR681FM	5905-00-760-0819	3-27	4			
RWR89SR825FM	5905	5-67	2			
		<b>3-8</b>				

PART NUMBER	NSN	FIGURE & INDEX NUMBER	QTY PER END ITEM	USMC SMR CODE	USMC SSI CODE	USMC REPL FACTOR
RWR89SIROOFM	5905-00-431-5225	6-66	2			
RWR89S22R6FM	5905-00-270-2954	6-48	1			
SCMA10513A	1240	8-1	1			
SE12XCO5	5940-00-052-9068	7-25	11			
SE19-5DO-1	5940	12-9	11			
TXBF032-025B	5999-00-999-4058	4-29	2			
UM5	5961-00-942-6429	4-28	6			
		5-24				
		6-47				
WTA14PCJT	5935	11-2	1			
WTA14SED9JL	5935	7-14	1			
020-122	5355	2-70	2			
125-09-3.25	5965	7-3	4			
1280B1	5940-00-703-0729	9-4	8			
1568B2XJC	5962	3-40	1			
1600160	9905	1-5	1			
1800481	5960	10-1	1			
1800482	5960	2-12	1			
1800489	5915	2-21	1			
1800493	5935	11-1	1			
1800509	5950	6-34	1			
1800510	5950	8-3	1			
1800860-2	5310	2-19B	4			
1/4	5935	2-16	2			
1/4-2	5935	2-18	1			
2N6294	5961-00-227-4032	5-25	1			
2N6296	5961	5-26	1			
2036298-15	9905	1-7	1			
205838-1	5935	7-10	1			
205841-1	5935	8-6	1			
206062-1	5935	7-13	1			
2062213-15	9905	1-6	1			
2160-1/4X5	5306	2-37	2			
22NA27-22-02	5310	2-46	4			
2201PH089	5970	7-15	2			
271166	5340-00-984-6629	2-24	3			
30467-1	5935-00-497-4347	7-20	1			
3061058	7690	8-11	1			
3063922M405K10	5910	6-23	2			
3063924 JL	5961-00-229-5160	6-39	1			
		<b>3-9</b>				

PART NUMBER	NSN	FIGURE & INDEX NUMBER	QTY PER END ITEM	USMC SMR CODE	USMC SSI CODE	USMC REPL FACTOR
3063926	5910	9-2	3			
3063960	5950-01-048-7568	6-80	1			
3064189-1	5961	6-40	1			
3065249-1	5905	2-61	2			
3065249-2	5905	2-60	1			
3065251-2	4140	2-26	1			
3065254-2001-7	5920	2-63	1			
3065254-2001-9	5960	9-3	1			
3065275-OIBIA	5962-00-425-9922	4-57	2			
3065720-1	5950	6-31	1			
3066034	5935	4-20	1			
3066048	6145	7-	1			
3066048-101	6625	7-5	1			
3066054-1	6780-01-077-7798	2-7	1			
3066055-1	5935	8-12	1			
3066056-1	6780-01-078-7359	2-3	1			
3066057-2	1240	5-76	1			
3066059	5999	5-72	1			
3066059-1	5999	5-75	1			
3066060-1	6780-01-077-8162	2-4	1			
3066061-2	1240	6-84	1			
3066063	5999	6-82	1			
3066064-1	6780-01-077-8163	2-2	1	PAFDD		
3066065-2	1240	4-62	1			
3066067-101	5999	4-61	1			
3066067-2	5999	4-58	1			
3066068-1	6780-01-078-3374	2-1	1	PAFDD		
3066069-2	1240	3-45	1			
3066071-1	5999	3-44	1			
3066074-1	6145	2-5	1			
3066075-2	1240	7-27	1			
3066077	1240	8-9	1			
3066130-1	1240	9-11	1			
3066448	5950	6-30	1			
3066561	1240	1-9	1			
3066562	1240	2-78	1			
3066563	1240	12-15	1			
3066564	5925	12-1	1			
3066565	5340	2-45	1			
3066565-1	5340	2-48	1			
3066568	6675	12-12	1			
3066569	8475	1-1	1			
3066570	8475	1-3	1			
		<b>3-10</b>				



THIS PAGE MISSING NOT AVAILABLE FOR DIGITIZATION.

PAGE #  
4-1



**PIN: 054197-000**